

Louisa County, Iowa
Iowa South Zone (1402)
Horiz. Datum: NAD83(NSRS2007)
Vert. Datum: NAVD 1988
US Survey Feet
2007

Point Name: **131**

Designation: 96-131 Washington Co GPS Control Pt. (set by ASI in 1996)

Northing: **493530.54**sft Easting: **2193791.37**sft

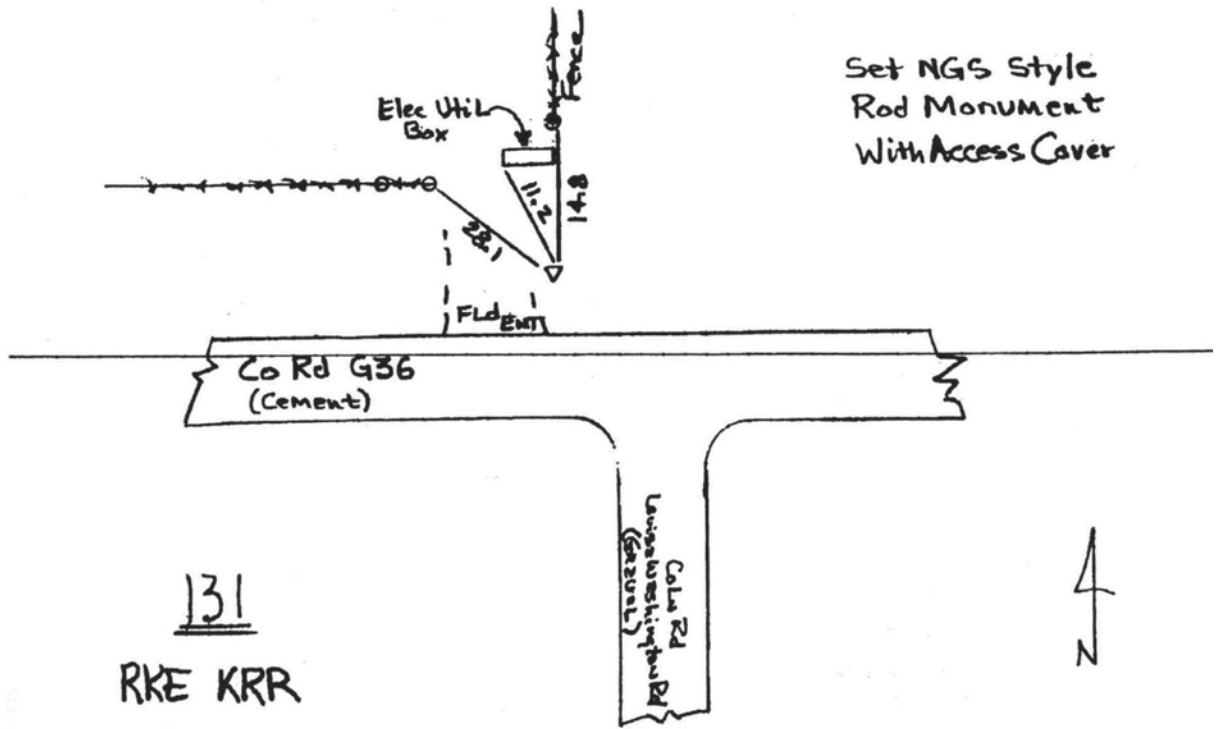
Orthometric Height: **744.14**sft Ellipsoid Height: **636.53**sft **Geoid03**

Latitude: **41°20'13.25876"N** Longitude: **91°29'04.86658"W**

Mapping Angle: **1°19'39"** Combination Scale Factor: **0.99992081**

Monument Type: Berntsen Top Security Rod Monument with a 2-1/2" dia. domed survey cap and permanent magnet encased in a 5" dia. PVC pipe with a NGS style aluminum access cover.

To Reach: 65 ft. North of G36 on centerline of Louisa-Washington Rd. extended north. Near the S.E. corner of Sec 36, T76N, R6W.



This document was prepared by DCI and GBC for use by Louisa County, Iowa.