

Louisa County, Iowa
Iowa South Zone (1402)
Horiz. Datum: NAD83(NSRS2007)
Vert. Datum: NAVD 1988
US Survey Feet
2007

Point Name: **142**

Designation: 96-142 Washington Co GPS Control Pt. (set by ASI in 1996)

Northing: **472502.51**sft Easting: **2194123.44**sft

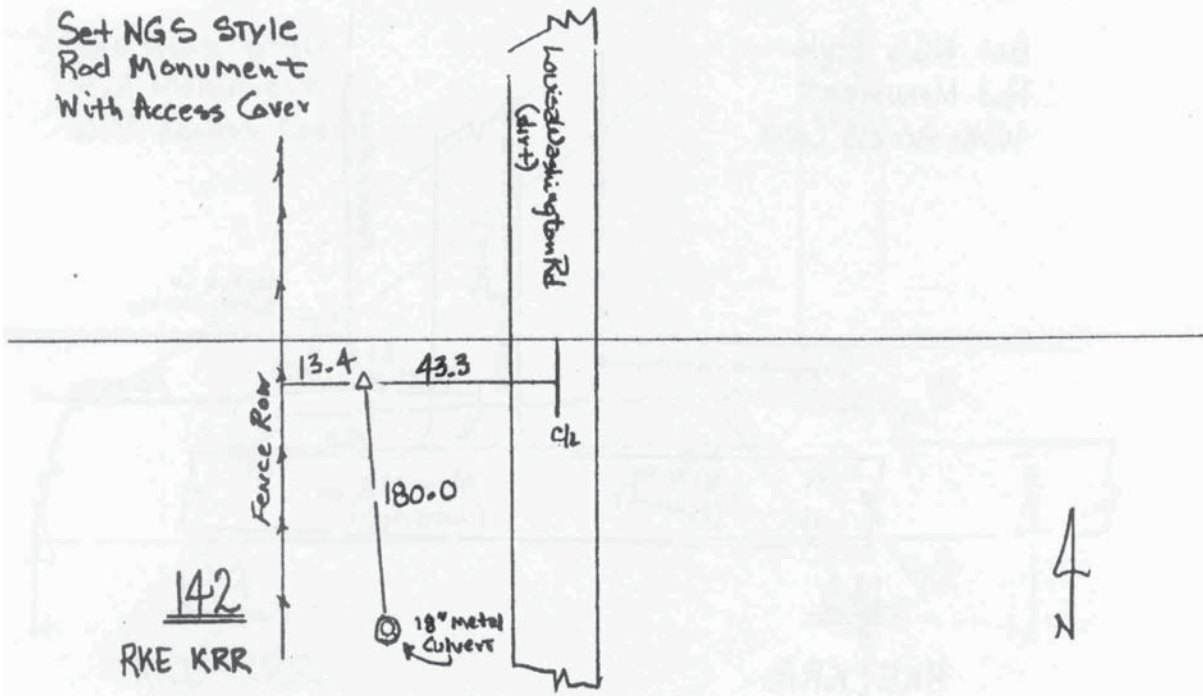
Orthometric Height: **700.59**sft Ellipsoid Height: **592.83**sft **Geoid03**

Latitude: **41°16'45.46923"N** Longitude: **91°29'06.89912"W**

Mapping Angle: **1°19'38"** Combination Scale Factor: **0.99992102**

Monument Type: Berntsen Top Security Rod Monument with a 2-1/2" dia. domed survey cap and permanent magnet encased in a 5" dia. PVC pipe with a NGS style aluminum access cover.

To Reach: 45 ft. West of Louisa-Washington Rd, 1000 ft. South of 255th St. Near the S.E. corner of Sec. 24, T75N, R6W.



This document was prepared by DCI and GBC for use by Louisa County, Iowa.