

**Louisa County, Iowa**  
Iowa South Zone (1402)  
Horiz. Datum: NAD83(NSRS2007)  
Vert. Datum: NAVD 1988  
US Survey Feet  
**2007**

Point Name: **149**

**Designation:** 96-149 Washington Co GPS Control Pt. (set by ASI in 1996)

Northing: **461656.88**sft    Easting: **2194395.31**sft

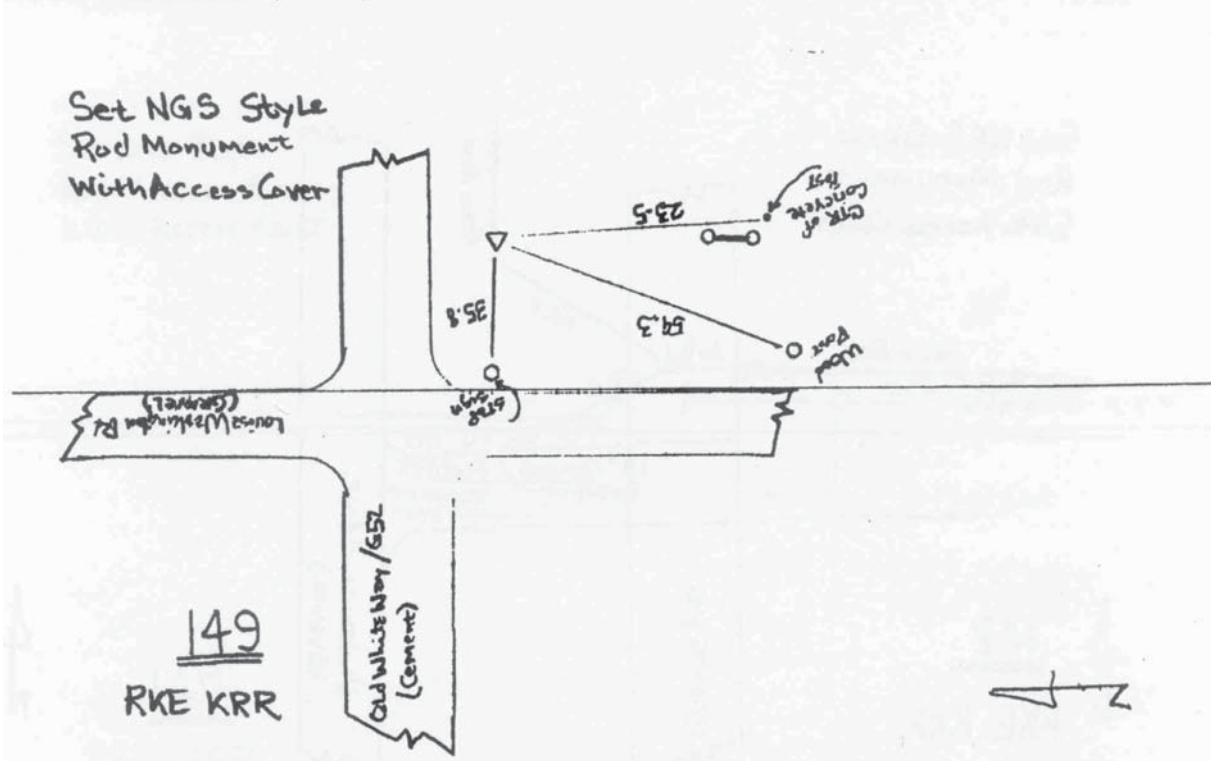
Orthometric Height: **729.89**sft    Ellipsoid Height: **622.12**sft    **Geoid03**

Latitude: **41°14'58.27362"N**    Longitude: **91°29'06.62939"W**

Mapping Angle: **1°19'38"**    Combination Scale Factor: **0.99991904**

**Monument Type:** Berntsen Top Security Rod Monument with a 2-1/2" dia. domed survey cap and permanent magnet encased in a 5" dia. PVC pipe with a NGS style aluminum access cover.

To Reach: 45 ft. South of Old White Way (G52), 55 ft. East of Louisa-Washington Rd. Near the N.W. corner of Sec 6, T74N, R5W.



*This document was prepared by DCI and GBC for use by Louisa County, Iowa.*