

**Louisa County, Iowa**  
Iowa South Zone (1402)  
Horiz. Datum: NAD83(NSRS2007)  
Vert. Datum: NAVD 1988  
US Survey Feet  
**2007**

Point Name: **160**

**Designation:** 96-160 Washington Co GPS Control Pt. (set by ASI in 1996)

Northing: **440477.63sft**    Easting: **2194621.36sft**

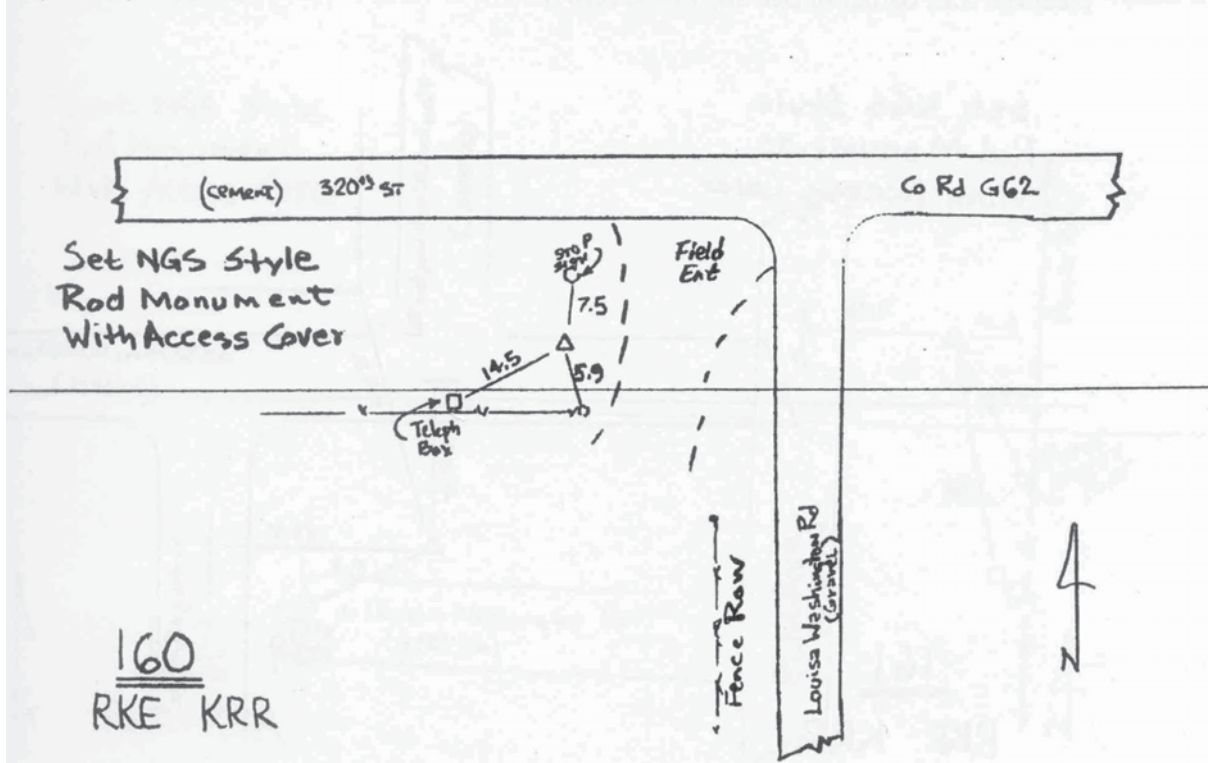
Orthometric Height: **730.06sft**    Ellipsoid Height: **622.22sft**    **Geoid03**

Latitude: **41°11'29.01100"N**    Longitude: **91°29'10.08981"W**

Mapping Angle: **1°19'36"**    Combination Scale Factor: **0.99991869**

**Monument Type:** Berntsen Top Security Rod Monument with a 2-1/2" dia. domed survey cap and permanent magnet encased in a 5" dia. PVC pipe with a NGS style aluminum access cover.

To Reach: 35 ft. South of G62, 45 ft. West of Louisa-Washington Rd. Near the N.E. corner of Sec 25, T74N, R6W.



*This document was prepared by DCI and GBC for use by Louisa County, Iowa.*