

Louisa County, Iowa
Iowa South Zone (1402)
Horiz. Datum: NAD83(NSRS2007)
Vert. Datum: NAVD 1988
US Survey Feet
2007

Point Name: **220**

Designation: 99-220 Des Moines Co GPS Control Pt. (set by ASI in 1999)

Northing: **398911.93**sft Easting: **2243642.11**sft

Orthometric Height: **803.98**sft Ellipsoid Height: **695.69**sft **Geoid03**

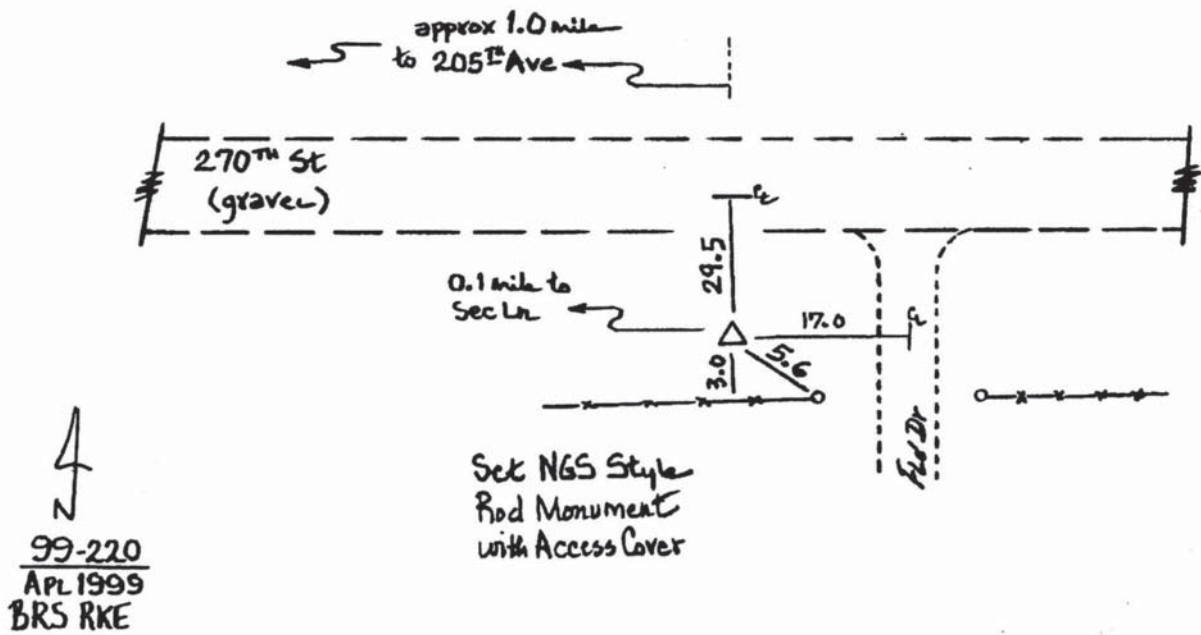
Latitude: **41°04'26.72570"N** Longitude: **91°18'42.75317"W**

Mapping Angle: **1°26'29"** Combination Scale Factor: **0.99991761**

Monument Type: Berntsen Top Security Rod Monument with a 2-1/2" dia. domed survey cap and permanent magnet encased in a 5" dia. PVC pipe with a NGS style aluminum access cover.

To Reach: 30ft S of 270th St, 0.1mi E of Sec line. 0.1mi E of NW cor of Sec 3 T72N R4W.

Date Printed July 30, 1999



This document was prepared by DCI and GBC for use by Louisa County, Iowa.