

Louisa County, Iowa
Iowa South Zone (1402)
Horiz. Datum: NAD83(NSRS2007)
Vert. Datum: NAVD 1988
US Survey Feet
2007

Point Name: **244**

Designation: 99-244 Des Moines Co GPS Control Pt. (set by ASI in 1999)

Northing: **399437.09**sft Easting: **2275016.90**sft

Orthometric Height: **747.67**sft Ellipsoid Height: **639.35**sft **Geoid03**

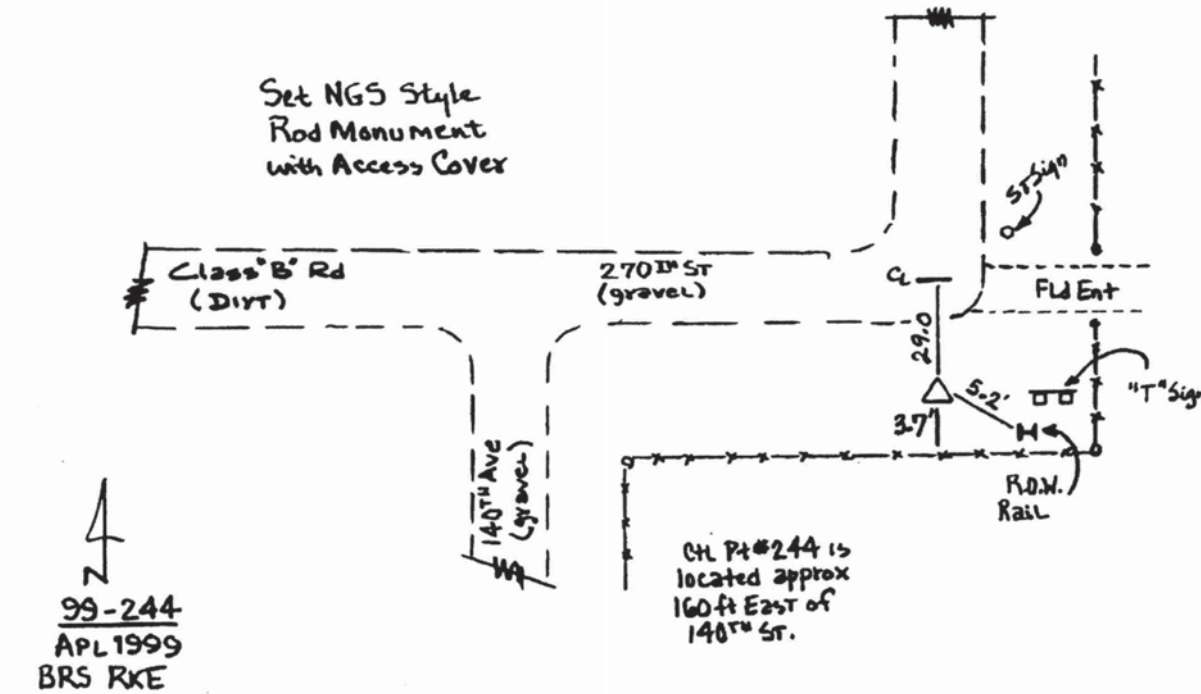
Latitude: **41°04'23.91255"N** Longitude: **91°11'53.04912"W**

Mapping Angle: **1°30'59"** Combination Scale Factor: **0.99992033**

Monument Type: Berntsen Top Security Rod Monument with a 2-1/2" dia. domed survey cap and permanent magnet encased in a 5" dia. PVC pipe with a NGS style aluminum access cover.

To Reach: 30ft S of 270 St, 160ft E of 140th Av. Near the NW cor Sec 3 T72N R3W.

Date Printed July 30, 1999



This document was prepared by DCI and GBC for use by Louisa County, Iowa.