

Louisa County, Iowa
Iowa South Zone (1402)
Horiz. Datum: NAD83(NSRS2007)
Vert. Datum: NAVD 1988
US Survey Feet
2007

Point Name: **266**

Designation: 99-266 Des Moines Co GPS Control Pt. (set by ASI in 1999)

Northing: **400154.43**sft Easting: **2306100.26**sft

Orthometric Height: **704.07**sft Ellipsoid Height: **595.87**sft **Geoid03**

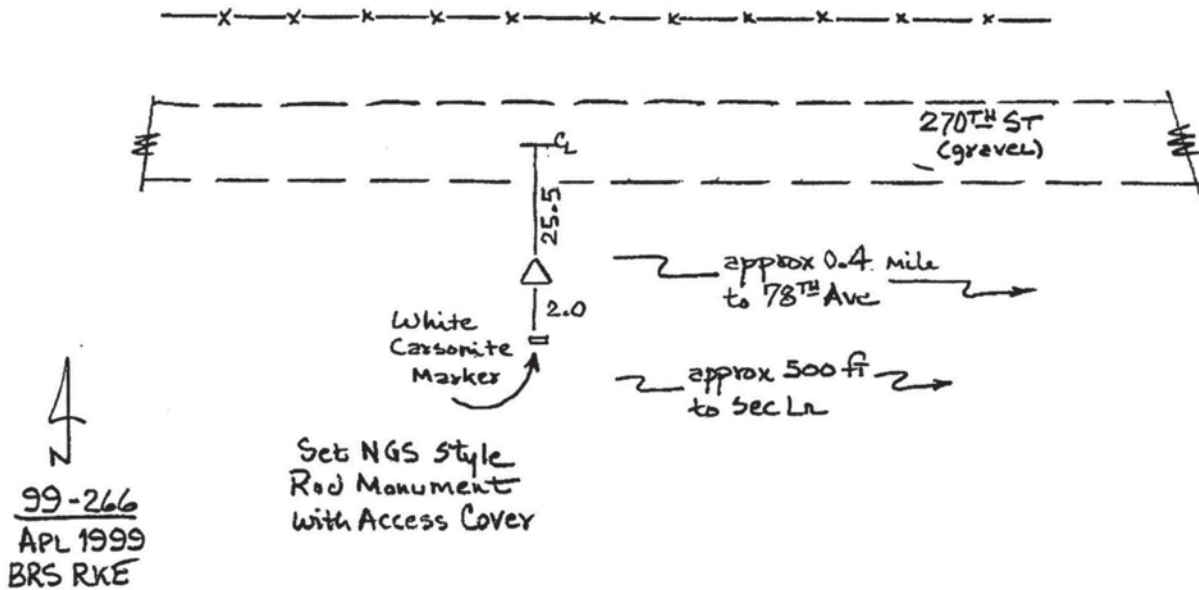
Latitude: **41°04'22.67187"N** Longitude: **91°05'07.08951"W**

Mapping Angle: **1°35'26"** Combination Scale Factor: **0.99992242**

Monument Type: Berntsen Top Security Rod Monument with a 2-1/2" dia. domed survey cap and permanent magnet encased in a 5" dia. PVC pipe with a NGS style aluminum access cover.

To Reach: 26ft S of 270th St, 500ft W of Sec line. 500ft W of the NE cor Sec 4 T72N RW.

Date Printed July 30, 1999



This document was prepared by DCI and GBC for use by Louisa County, Iowa.