

Louisa County, Iowa
Iowa South Zone (1402)
Horiz. Datum: NAD83(NSRS2007)
Vert. Datum: NAVD 1988
US Survey Feet
2007

Point Name: **277**

Designation: 99-277 Des Moines Co GPS Control Pt. (set by ASI in 1999)

Northing: **399006.82sft** Easting: **2336008.10sft**

Orthometric Height: **529.72sft** Ellipsoid Height: **421.50sft** **Geoid03**

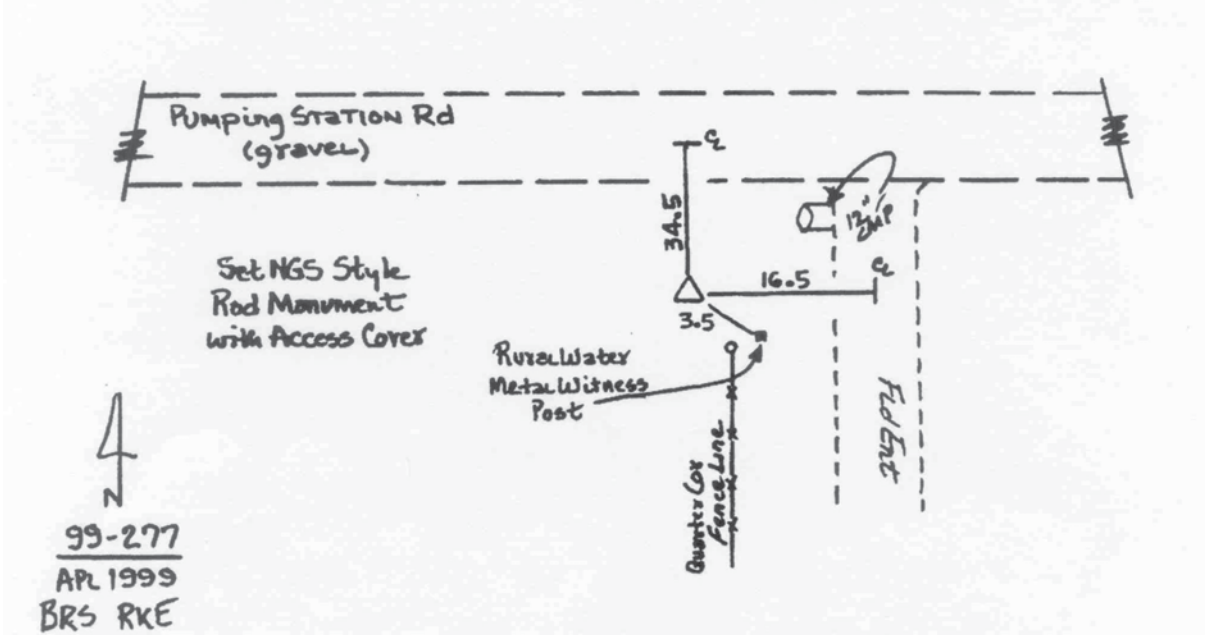
Latitude: **41°04'02.95029"N** Longitude: **90°58'37.18321"W**

Mapping Angle: **1°39'43"** Combination Scale Factor: **0.99993096**

Monument Type: Berntsen Top Security Rod Monument with a 2-1/2" dia. domed survey cap and permanent magnet encased in a 5" dia. PVC pipe with a NGS style aluminum access cover.

To Reach: 35ft S of Pumping Station Rd, on the W side of field ent S. Near the Ctr of Sec 4 T72N R1W.

Date Printed July 30, 1999



This document was prepared by DCI and GBC for use by Louisa County, Iowa.