

Louisa County, Iowa
Iowa South Zone (1402)
Horiz. Datum: NAD83(NSRS2007)
Vert. Datum: NAVD 1988
US Survey Feet
2007

Point Name: **308**

Designation: CBN horiz control station "39 RWM" PID: AE2146

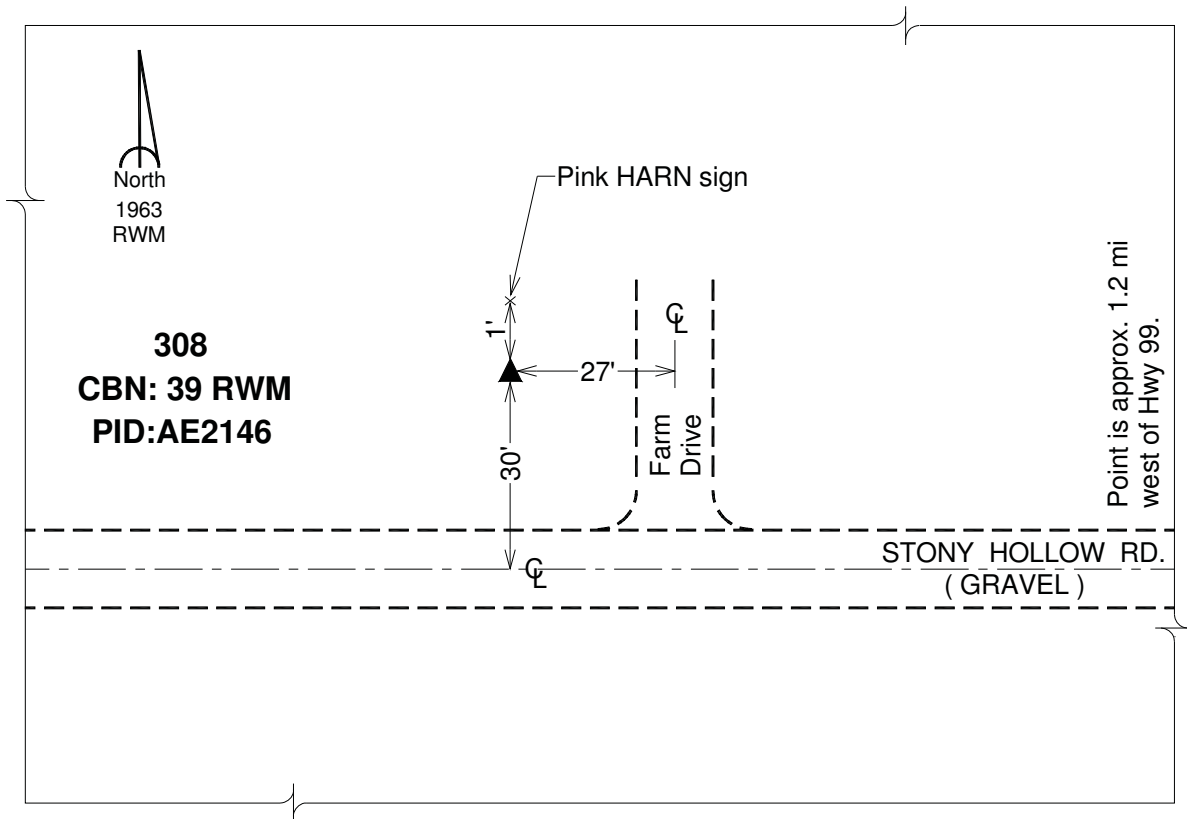
Northing: **339390.00**sft Easting: **2310282.85**sft

Orthometric Height: **708.27**sft Ellipsoid Height: **599.69**sft **Geoid03**

Latitude: **40°54'21.33626"N** Longitude: **91°04'34.60353"W**

Mapping Angle: **1°35'47"** Combination Scale Factor: **0.99993293**

Monument Type: The station is a standard USGS bench mark disk stamped "39 RWM 1963" and set in a prefabricated concrete post imbedded in the ground.



This document was prepared by DCI and GBC for use by Louisa County, Iowa.