

Louisa County, Iowa
 Iowa South Zone (1402)
 Horiz. Datum: NAD83(NSRS2007)
 Vert. Datum: NAVD 1988
 US Survey Feet
2007

Point Name: **435**

Designation: 2000-135 Muscatine Co GPS Control Pt. (set by ASI in 2000)

Northing: **517704.56sft** Easting: **2225105.32sft**

Orthometric Height: **612.94sft** Ellipsoid Height: **505.34sft** **Geoid03**

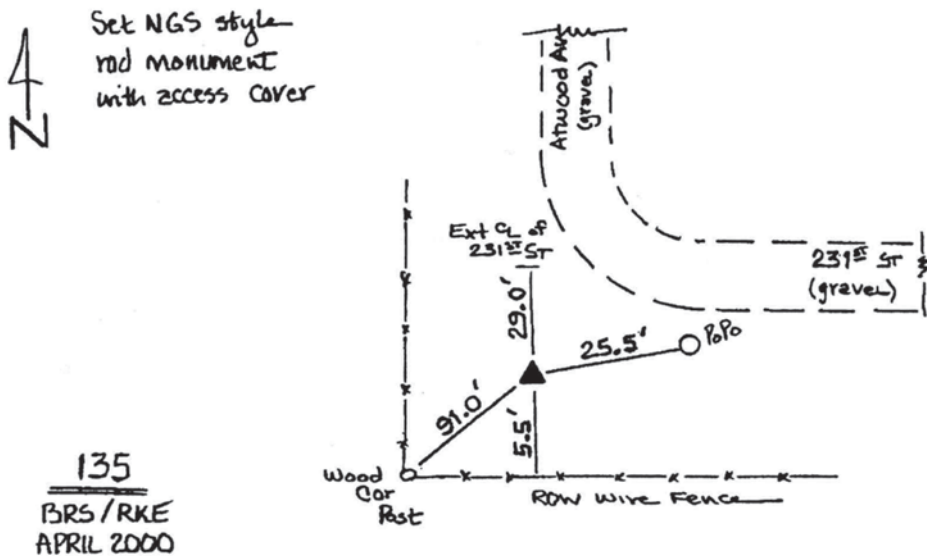
Latitude: **41°24'04.66710"N** Longitude: **91°22'06.71354"W**

Mapping Angle: **1°24'14"** Combination Scale Factor: **0.99993036**

Monument Type: Berntsen Top Security Rod Monument with a 2-1/2" dia. domed survey cap and permanent magnet encased in a 5" dia. PVC pipe with a NGS style aluminum access cover.

To Reach: 20ft W of extended CL of Atwood Av, 30ft S of extended CL of 231st St., near the W 1/4 cor Sec 7 T76N R4W.

Date Printed August 9, 2000



This document was prepared by DCI and GBC for use by Louisa County, Iowa.