

**Louisa County, Iowa**  
 Iowa South Zone (1402)  
 Horiz. Datum: NAD83(NSRS2007)  
 Vert. Datum: NAVD 1988  
 US Survey Feet  
**2007**

Point Name: **440**

**Designation:** 2000-140 Muscatine Co GPS Control Pt. (set by ASI in 2000)

Northing: **504529.43sft**    Easting: **2225208.25sft**

Orthometric Height: **597.96sft**    Ellipsoid Height: **490.31sft**    **Geoid03**

Latitude: **41°21'54.50535"N**

Longitude: **91°22'09.59780"W**

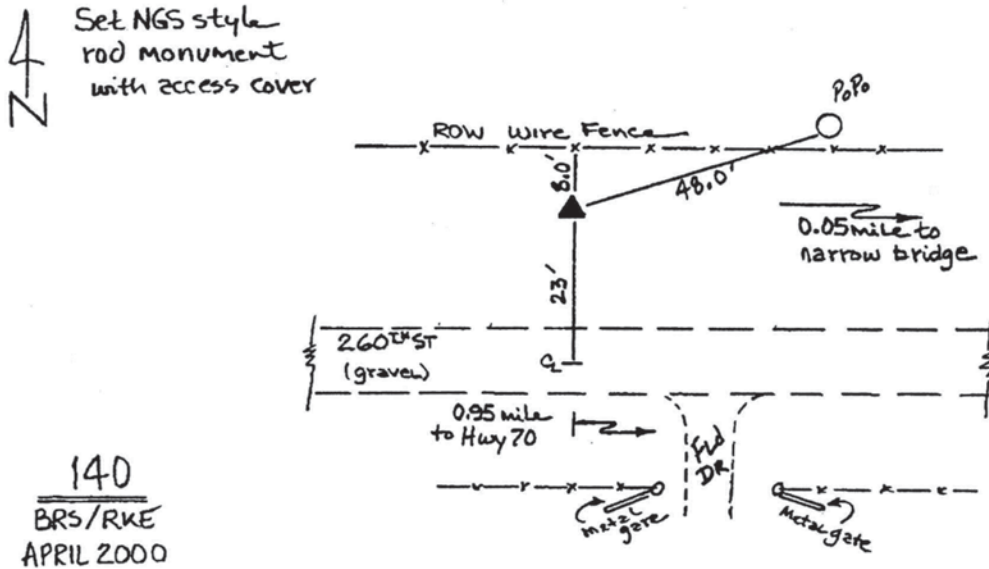
Mapping Angle: **1°24'13"**

Combination Scale Factor: **0.99992907**

**Monument Type:** Berntsen Top Security Rod Monument with a 2-1/2" dia. domed survey cap and permanent magnet encased in a 5" dia. PVC pipe with a NGS style aluminum access cover.

**To Reach:** 25ft N of 260th St., 20ft W of section line fence to N, near the SE cor Sec 24 T76N R5W.

Date Printed August 9, 2000



*This document was prepared by DCI and GBC for use by Louisa County, Iowa.*