

Louisa County, Iowa
Iowa South Zone (1402)
Horiz. Datum: NAD83(NSRS2007)
Vert. Datum: NAVD 1988
US Survey Feet
2007

Point Name: **446**

Designation: 2000-146 Muscatine Co GPS Control Pt. (set by ASI in 2000)

Northing: **495156.90**sft Easting: **2225332.28**sft

Orthometric Height: **604.37**sft Ellipsoid Height: **496.68**sft **Geoid03**

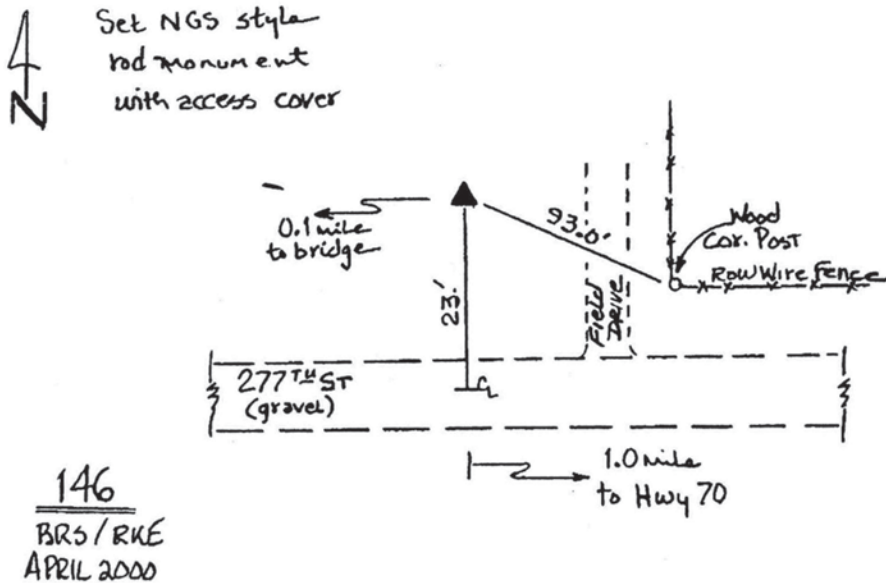
Latitude: **41°20'21.89784"N** Longitude: **91°22'10.98178"W**

Mapping Angle: **1°24'12"** Combination Scale Factor: **0.99992758**

Monument Type: Berntsen Top Security Rod Monument with a 2-1/2" dia. domed survey cap and permanent magnet encased in a 5" dia. PVC pipe with a NGS style aluminum access cover.

To Reach: 20ft N of 277th St., 80ft W of section line fence to N, near the SE cor Sec 36 T76N R5W.

Date Printed August 9, 2000



This document was prepared by DCI and GBC for use by Louisa County, Iowa.