

Louisa County, Iowa
 Iowa South Zone (1402)
 Horiz. Datum: NAD83(NSRS2007)
 Vert. Datum: NAVD 1988
 US Survey Feet
2007

Point Name: **447**

Designation: 2000-147 Muscatine Co GPS Control Pt. (set by ASI in 2000)

Northing: **497240.86sft** Easting: **2257120.05sft**

Orthometric Height: **685.38sft** Ellipsoid Height: **577.63sft** **Geoid03**

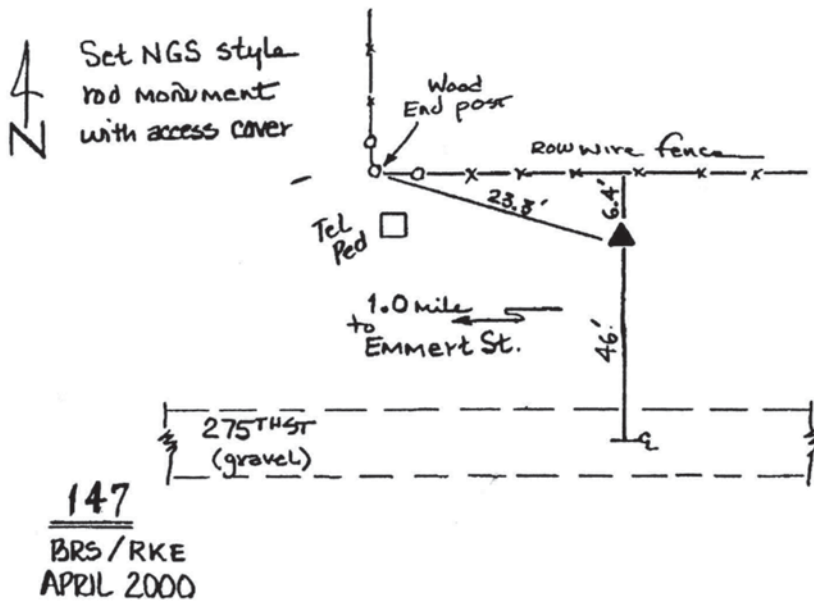
Latitude: **41°20'34.58143"N** Longitude: **91°15'13.67707"W**

Mapping Angle: **1°28'46"** Combination Scale Factor: **0.99992387**

Monument Type: Berntsen Top Security Rod Monument with a 2-1/2" dia. domed survey cap and permanent magnet encased in a 5" dia. PVC pipe with a NGS style aluminum access cover.

To Reach: 45ft N of 275th St., 20ft E of N/S section line fence, near the W 1/4 cor Sec 31 T76N R3W.

Date Printed August 9, 2000



This document was prepared by DCI and GBC for use by Louisa County, Iowa.