

**Louisa County, Iowa**  
Iowa South Zone (1402)  
Horiz. Datum: NAD83(NSRS2007)  
Vert. Datum: NAVD 1988  
US Survey Feet  
**2007**

Point Name: **448**

**Designation:** 2000-148 Muscatine Co GPS Control Pt. (set by ASI in 2000)

Northing: **496336.86**sft    Easting: **2289667.04**sft

Orthometric Height: **545.87**sft    Ellipsoid Height: **438.01**sft    **Geoid03**

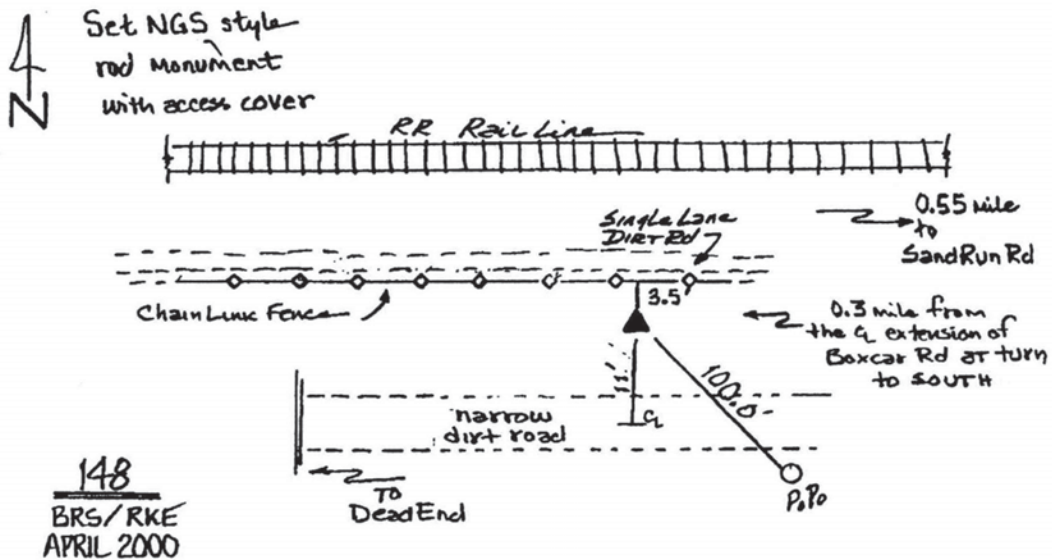
Latitude: **41°20'17.13037"N**    Longitude: **91°08'07.44235"W**

Mapping Angle: **1°33'27"**    Combination Scale Factor: **0.99993033**

**Monument Type:** Berntsen Top Security Rod Monument with a 2-1/2" dia. domed survey cap and permanent magnet encased in a 5" dia. PVC pipe with a NGS style aluminum access cover.

**To Reach:** 10ft N of extended CL of Box Car Rd along a dirt path, approx. 0.55 mi W of Sand Run Rd, in the SW 1/4 of Sec 31 T76N R2W.

Date Printed August 9, 2000



*This document was prepared by DCI and GBC for use by Louisa County, Iowa.*