

Louisa County, Iowa
Iowa South Zone (1402)
Horiz. Datum: NAD83(NSRS2007)
Vert. Datum: NAVD 1988
US Survey Feet
2007

Point Name: **449**

Designation: 2000-149 Muscatine Co GPS Control Pt. (set by ASI in 2000)

Northing: **495097.44sft** Easting: **2296969.90sft**

Orthometric Height: **538.46sft** Ellipsoid Height: **430.62sft** **Geoid03**

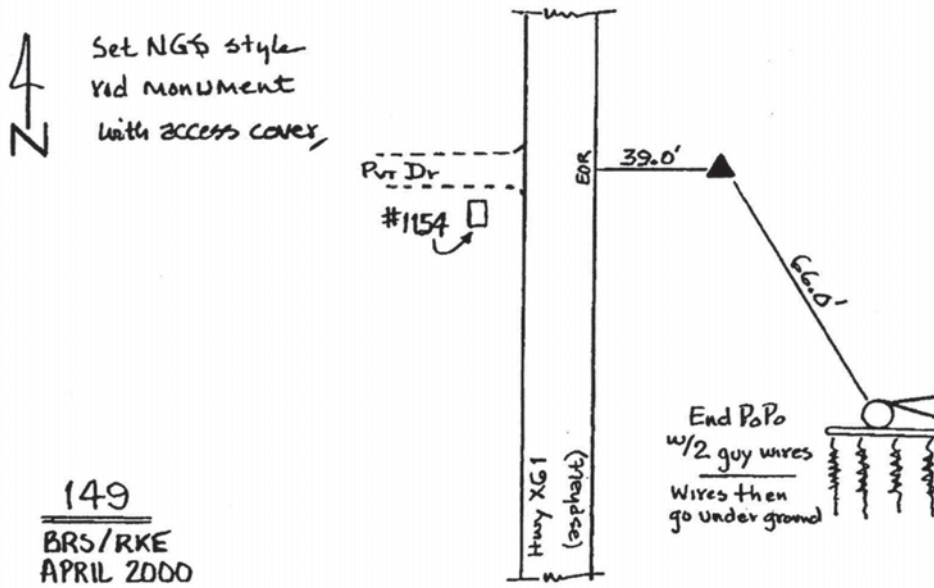
Latitude: **41°20'02.91658"N** Longitude: **91°06'32.18650"W**

Mapping Angle: **1°34'30"** Combination Scale Factor: **0.99993052**

Monument Type: Berntsen Top Security Rod Monument with a 2-1/2" dia. domed survey cap and permanent magnet encased in a 5" dia. PVC pipe with a NGS style aluminum access cover.

To Reach: near Louisa-Muscatine Co. Line also "X 61" apprx. 0.25 mi N of Cimarron Rd. in Louisa Co., 40ft E of "X 61" on line with dirt rd to W near S 1/4 cor of Sec 32 T76N R2W.

Date Printed August 9, 2000



This document was prepared by DCI and GBC for use by Louisa County, Iowa.