

Louisa County, Iowa
Iowa South Zone (1402)
Horiz. Datum: NAD83(NSRS2007)
Vert. Datum: NAVD 1988
US Survey Feet
2007

Point Name: **503**

Designation: NGS 1st order vertical control station "D 8" PID: MG0416

Northing: **499759.00**sft Easting: **2193674.31**sft

Orthometric Height: **683.40**sft Ellipsoid Height: **575.94**sft **Geoid03**

Latitude: **41°21'14.80948"N**

Longitude: **91°29'04.50905"W**

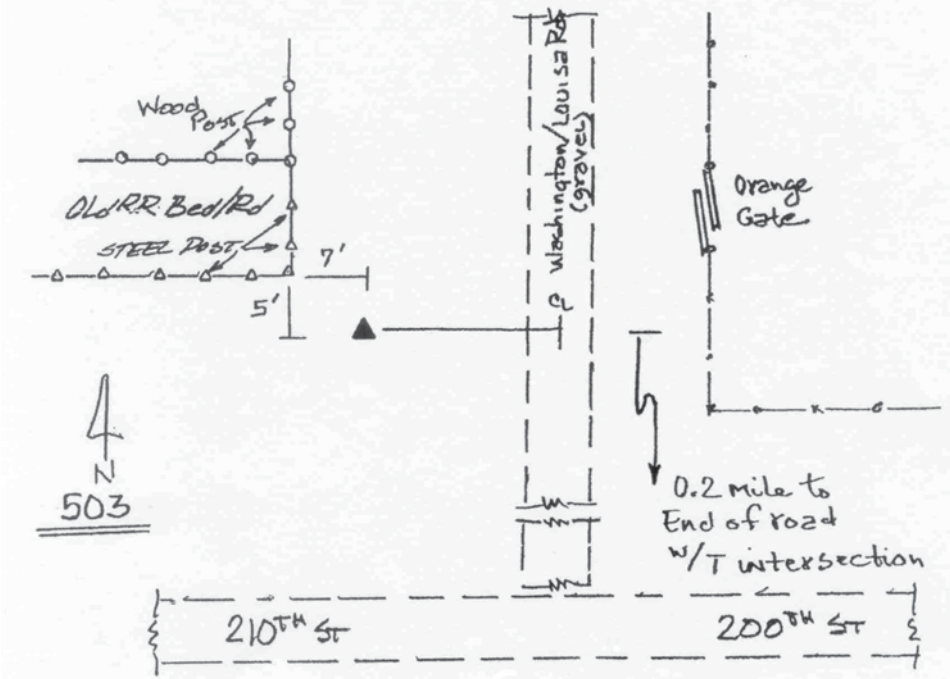
Mapping Angle: **1°19'39"**

Combination Scale Factor: **0.99992445**

Monument Type: The station is a CGS bench mark disk stamped "683.575 D 8 1930" and set in the top of a concrete post.

To Reach: ****See the current NGS data sheet for complete station description****

Date Printed August 9, 2000



This document was prepared by DCI and GBC for use by Louisa County, Iowa.