

Louisa County, Iowa
Iowa South Zone (1402)
Horiz. Datum: NAD83(NSRS2007)
Vert. Datum: NAVD 1988
US Survey Feet
2007

Point Name: **507**

Designation: USGS 3rd order vertical control station "4 DRL 1964"

Northing: **472329.81**sft Easting: **2283888.51**sft

Orthometric Height: **696.81**sft Ellipsoid Height: **588.87**sft **Geoid03**

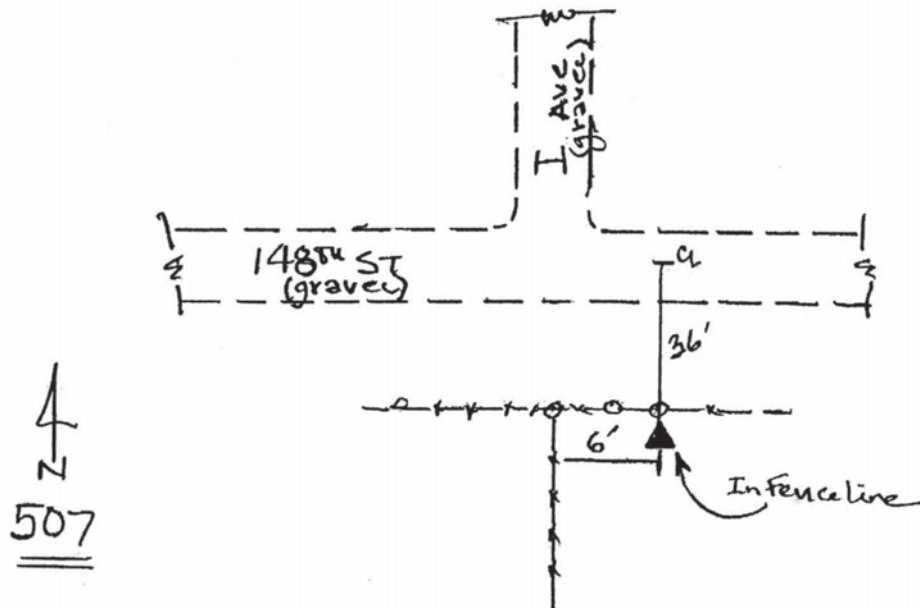
Latitude: **41°16'21.55751"N** Longitude: **91°09'31.64008"W**

Mapping Angle: **1°32'32"** Combination Scale Factor: **0.99992105**

Monument Type: The station is a USGS standard bench mark disk set in the top of a concrete post..

To Reach: ****See the USGS data sheet for complete station description****

Date Printed August 9, 2000



This document was prepared by DCI and GBC for use by Louisa County, Iowa.