

Louisa County, Iowa
Horizontal Datum: **NAD 83(2011)** - Vertical Datum: **NAVD 1988**
Iowa State Plane South Zone (1402)
Iowa Regional Coordinate System Zone 14 Burlington TM
US Survey Feet
2015

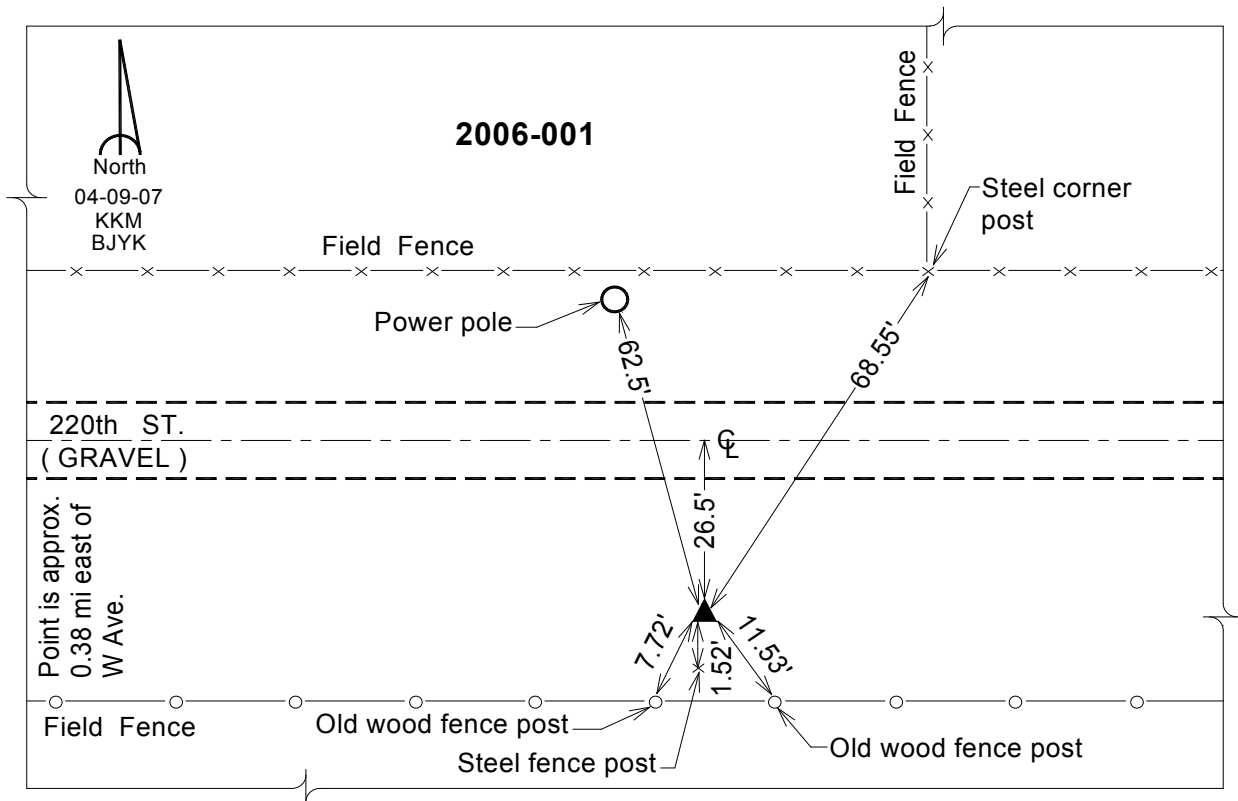
Point Name: **1**
Designation: 2006-001 Louisa Co GPS Control Pt.

NAD 83(NA2011) Latitude: **N41°23'14.78371"** Longitude: **W91°25'43.97601"**
NAVD 88 Ortho Height: **615.300** sft Ellip. Ht: **507.548**sft **Geoid12A**

Iowa South Zone (1402) Northing: **512257.342**sft Easting: **2208673.742**sft
Mapping Angle: **1°21'51"** Combination Scale Factor: **0.999929438**

IaRCS Zone 14 Northing: **6614470.583**sft Easting: **24450911.889**sft
Mapping Angle: **'-00° 07' 06"** Combination Scale Factor: **0.999996443**

Monument Type: Berntsen Top Security Rod Monument with a 2-1/2" dia. domed survey cap and permanent magnet encased in a white PVC pipe with a NGS style aluminum access cover.



This document was prepared by Dan Corbin, Inc. on February 26, 2015 for Louisa County, Iowa