

**Louisa County, Iowa**  
 Horizontal Datum: **NAD 83(2011)** - Vertical Datum: **NAVD 1988**  
 Iowa State Plane South Zone (1402)  
 Iowa Regional Coordinate System Zone 14 Burlington TM  
 US Survey Feet  
**2015**

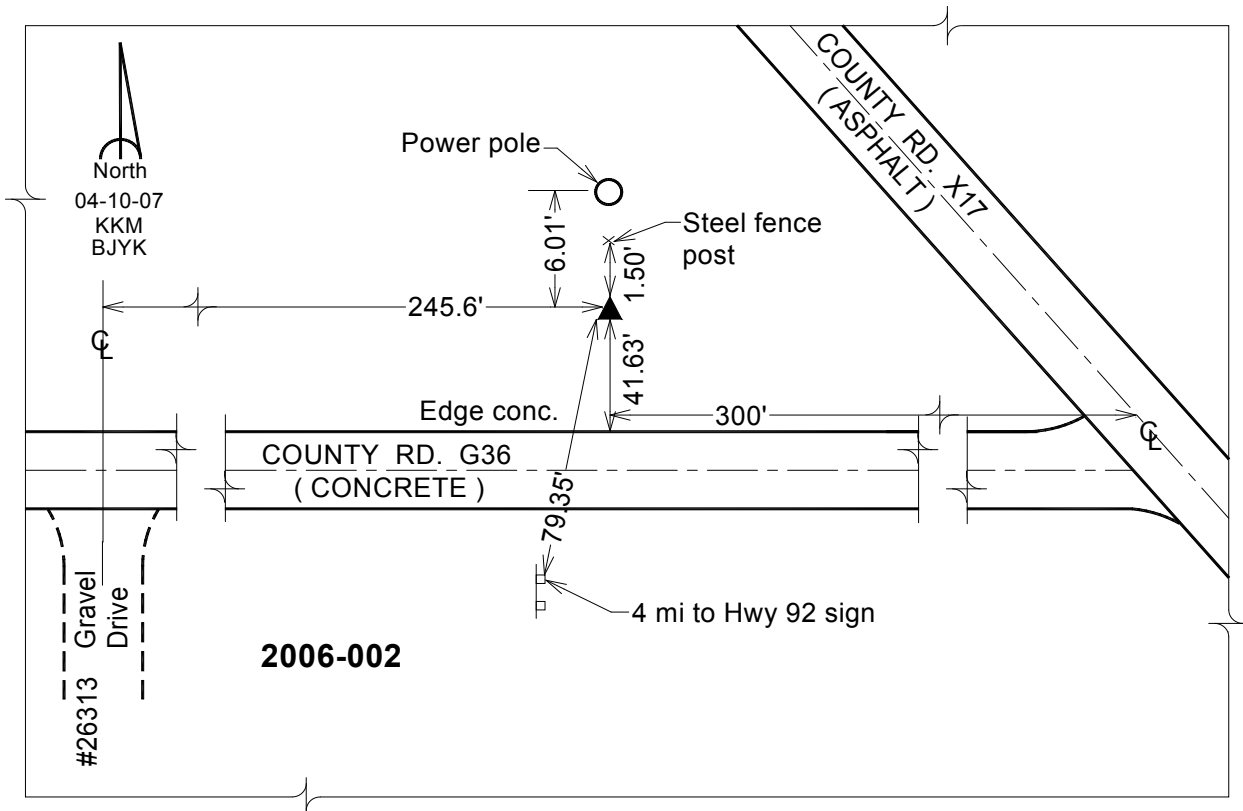
Point Name: **2**  
**Designation:** 2006-002 Louisa Co GPS Control Pt.

NAD 83(NA2011) Latitude: **N41°20'11.45248"** Longitude: **W91°25'49.16307"**  
 NAVD 88 Ortho Height: **728.714** sft Ellip. Ht: **620.869**sft **Geoid12A**

Iowa South Zone (1402) Northing: **493698.283**sft Easting: **2208719.942**sft  
 Mapping Angle: **1°21'48"** Combination Scale Factor: **0.999921538**

IaRCS Zone 14 Northing: **6595915.271**sft Easting: **24450477.905**sft  
 Mapping Angle: **-00° 07' 09"** Combination Scale Factor: **0.999991063**

**Monument Type:** Berntsen Top Security Rod Monument with a 2-1/2" dia. domed survey cap and permanent magnet encased in a white PVC pipe with a NGS style aluminum access cover.



*This document was prepared by Dan Corbin, Inc. on February 26, 2015 for Louisa County, Iowa*