

Louisa County, Iowa
Horizontal Datum: **NAD 83(2011)** - Vertical Datum: **NAVD 1988**
Iowa State Plane South Zone (1402)
Iowa Regional Coordinate System Zone 14 Burlington TM
US Survey Feet
2015

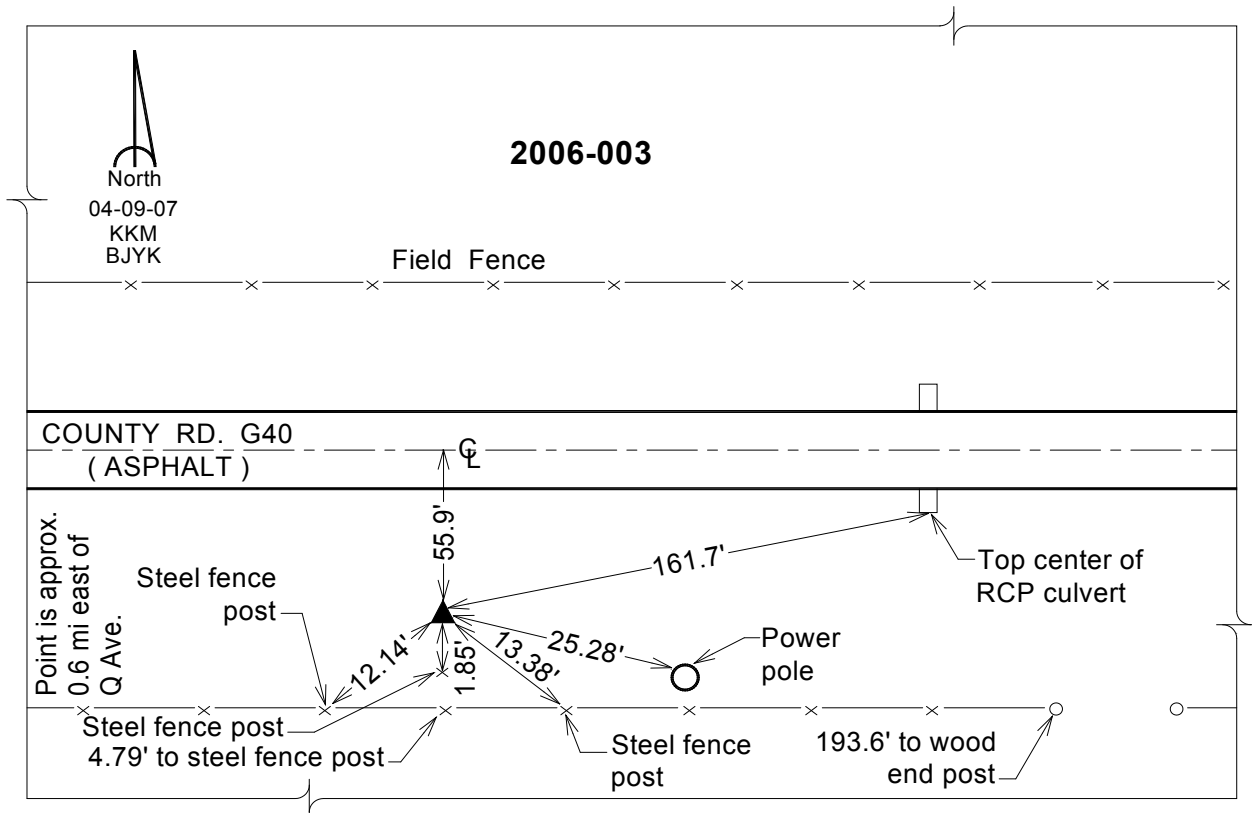
Point Name: **3**
Designation: 2006-003 Louisa Co GPS Control Pt.

NAD 83(NA2011) Latitude: **N41°19'41.02805"** Longitude: **W91°18'51.23229"**
NAVD 88 Ortho Height: **672.390** sft Ellip. Ht: **564.373**sft **Geoid12A**

Iowa South Zone (1402) Northing: **491399.782**sft Easting: **2240667.928**sft
Mapping Angle: **1°26'23"** Combination Scale Factor: **0.999923897**

IaRCS Zone 14 Northing: **6592790.897**sft Easting: **24482357.922**sft
Mapping Angle: **-00° 02' 33"** Combination Scale Factor: **0.999991323**

Monument Type: Berntsen Top Security Rod Monument with a 2-1/2" dia. domed survey cap and permanent magnet encased in a white PVC pipe with a NGS style aluminum access cover.



This document was prepared by Dan Corbin, Inc. on February 26, 2015 for Louisa County, Iowa