

**Louisa County, Iowa**  
 Horizontal Datum: **NAD 83(2011)** - Vertical Datum: **NAVD 1988**  
 Iowa State Plane South Zone (1402)  
 Iowa Regional Coordinate System Zone 14 Burlington TM  
 US Survey Feet  
**2015**

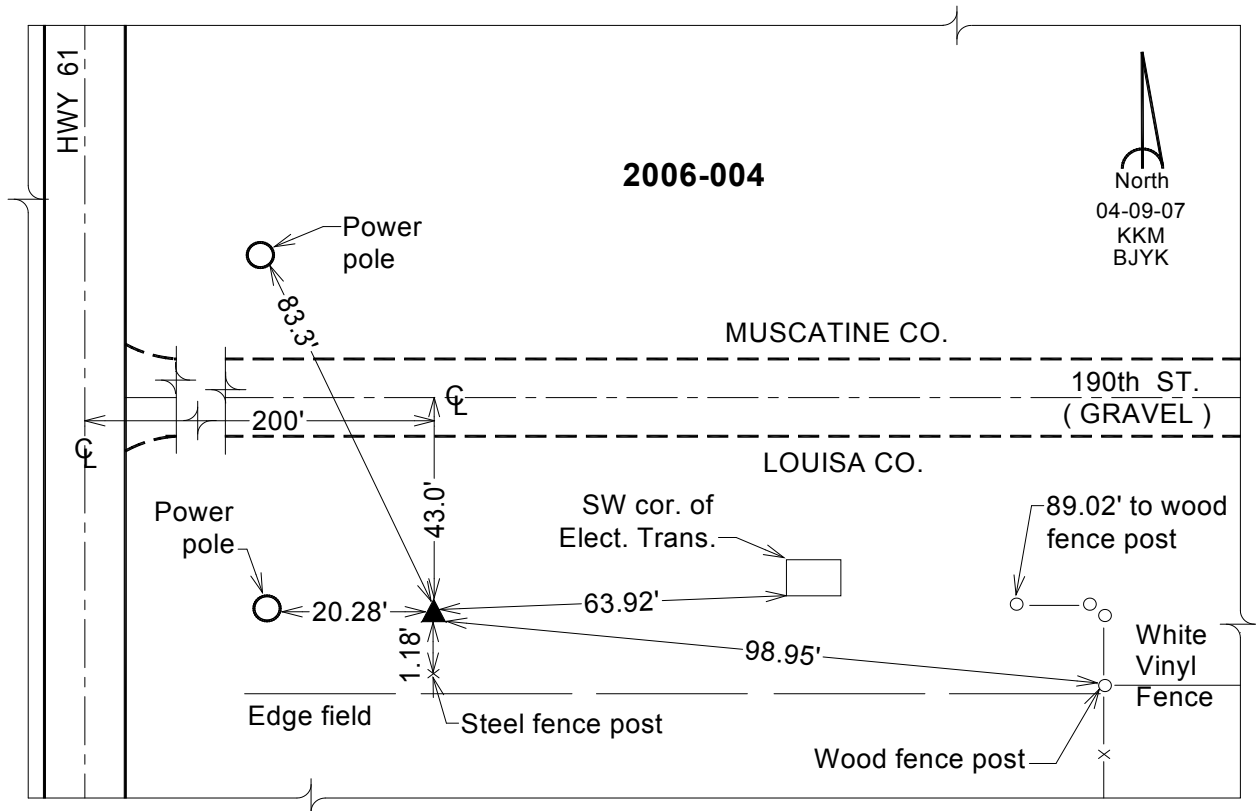
Point Name: **4**  
**Designation:** 2006-004 Louisa Co GPS Control Pt.

NAD 83(NA2011) Latitude: **N41°20'04.93573"** Longitude: **W91°11'56.77954"**  
 NAVD 88 Ortho Height: **733.210** sft Ellip. Ht: **625.108**sft **Geoid12A**

Iowa South Zone (1402) Northing: **494633.985**sft Easting: **2272212.336**sft  
 Mapping Angle: **1°30'56"** Combination Scale Factor: **0.999921262**

IaRCS Zone 14 Northing: **6595208.302**sft Easting: **24513977.552**sft  
 Mapping Angle: **00° 02' 01"** Combination Scale Factor: **0.999988281**

**Monument Type:** Berntsen Top Security Rod Monument with a 2-1/2" dia. domed survey cap and permanent magnet encased in a white PVC pipe with a NGS style aluminum access cover.



*This document was prepared by Dan Corbin, Inc. on February 26, 2015 for Louisa County, Iowa*