

**Louisa County, Iowa**  
 Horizontal Datum: **NAD 83(2011)** - Vertical Datum: **NAVD 1988**  
 Iowa State Plane South Zone (1402)  
 Iowa Regional Coordinate System Zone 14 Burlington TM  
 US Survey Feet  
**2015**

Point Name: **5**

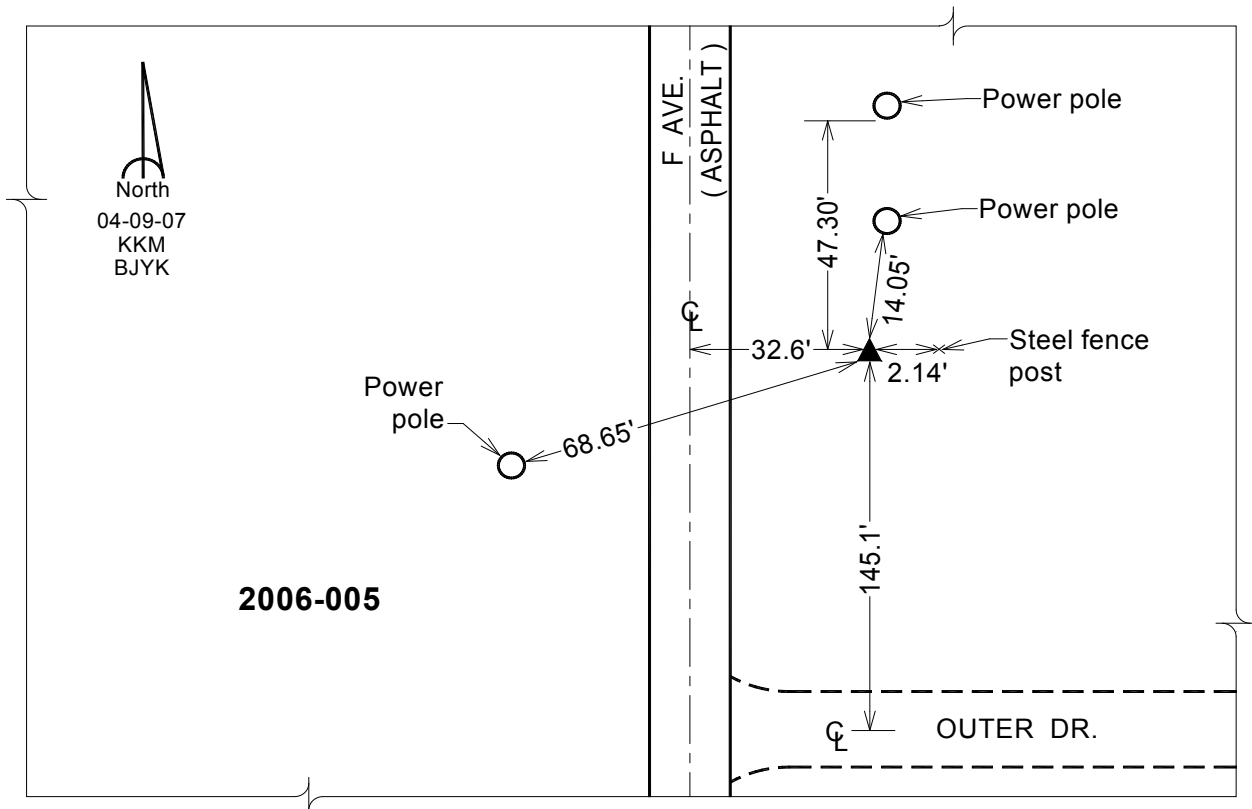
**Designation:** 2006-005 Louisa Co GPS Control Pt.

NAD 83(NA2011) Latitude: **N41°18'20.90084"** Longitude: **W91°05'59.42506"**  
 NAVD 88 Ortho Height: **547.640** sft Ellip. Ht: **439.398**sft **Geoid12A**

Iowa South Zone (1402) Northing: **484845.302**sft Easting: **2299752.974**sft  
 Mapping Angle: **1°34'52"** Combination Scale Factor: **0.999929075**

IaRCS Zone 14 Northing: **6584709.932**sft Easting: **24541257.694**sft  
 Mapping Angle: **00° 05' 57"** Combination Scale Factor: **0.999998898**

**Monument Type:** Berntsen Top Security Rod Monument with a 2-1/2" dia. domed survey cap and permanent magnet encased in a white PVC pipe with a NGS style aluminum access cover.



*This document was prepared by Dan Corbin, Inc. on February 26, 2015 for Louisa County, Iowa*