

Louisa County, Iowa
 Horizontal Datum: **NAD 83(2011)** - Vertical Datum: **NAVD 1988**
 Iowa State Plane South Zone (1402)
 Iowa Regional Coordinate System Zone 14 Burlington TM
 US Survey Feet
2015

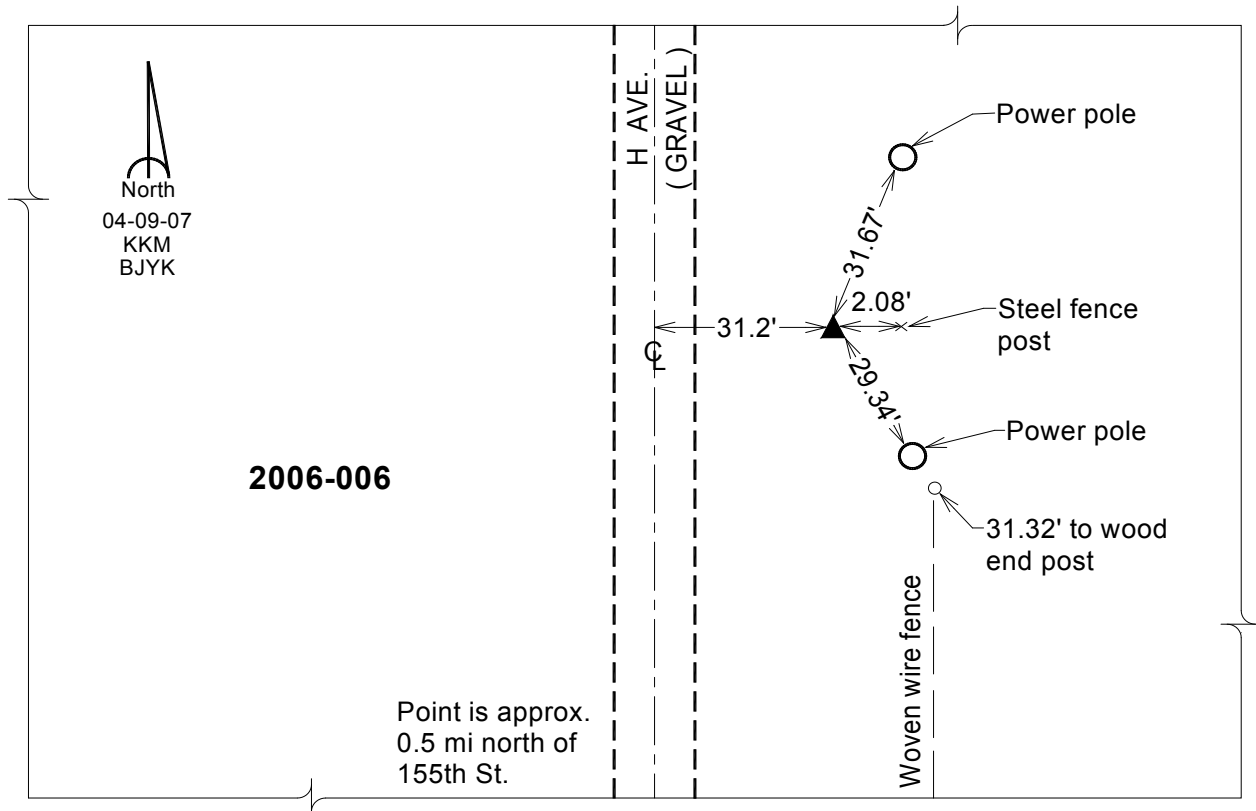
Point Name: **6**
Designation: 2006-006 Louisa Co GPS Control Pt.

NAD 83(NA2011) Latitude: **N41°17'27.15236"** Longitude: **W91°08'37.66341"**
 NAVD 88 Ortho Height: **537.660** sft Ellip. Ht: **429.409**sft **Geoid12A**

Iowa South Zone (1402) Northing: **479077.371**sft Easting: **2287828.598**sft
 Mapping Angle: **1°33'07"** Combination Scale Factor: **0.999929110**

IaRCS Zone 14 Northing: **6579251.931**sft Easting: **24529187.299**sft
 Mapping Angle: **00° 04' 12"** Combination Scale Factor: **0.999998405**

Monument Type: Berntsen Top Security Rod Monument with a 2-1/2" dia. domed survey cap and permanent magnet encased in a white PVC pipe with a NGS style aluminum access cover.



This document was prepared by Dan Corbin, Inc. on February 26, 2015 for Louisa County, Iowa