

**Louisa County, Iowa**  
 Horizontal Datum: **NAD 83(2011)** - Vertical Datum: **NAVD 1988**  
 Iowa State Plane South Zone (1402)  
 Iowa Regional Coordinate System Zone 14 Burlington TM  
 US Survey Feet  
**2015**

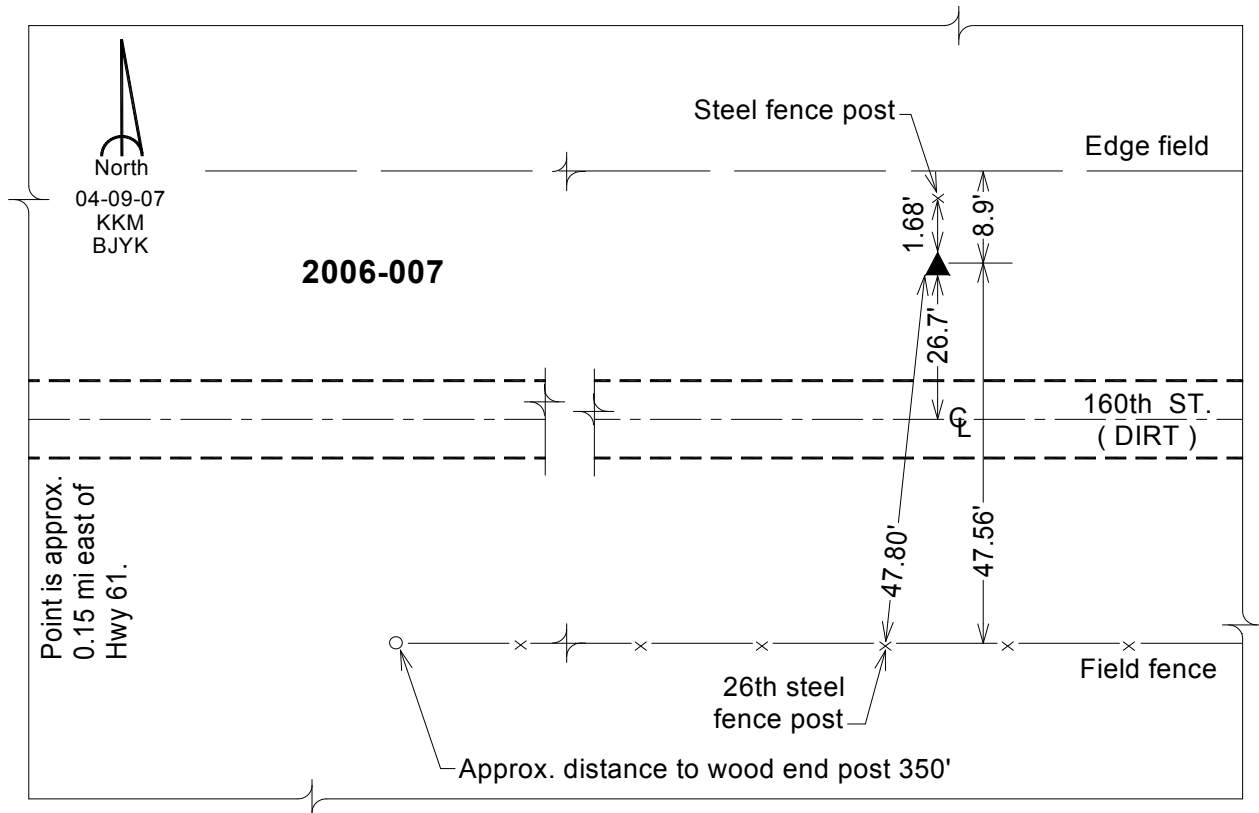
Point Name: **7**  
**Designation:** 2006-007 Louisa Co GPS Control Pt.

NAD 83(NA2011) Latitude: **N41°17'27.75922"** Longitude: **W91°11'38.35983"**  
 NAVD 88 Ortho Height: **690.490** sft Ellip. Ht: **582.284**sft **Geoid12A**

Iowa South Zone (1402) Northing: **478769.159**sft Easting: **2274038.633**sft  
 Mapping Angle: **1°31'08"** Combination Scale Factor: **0.999921820**

IaRCS Zone 14 Northing: **6579300.469**sft Easting: **24515393.025**sft  
 Mapping Angle: **00° 02' 13"** Combination Scale Factor: **0.999990380**

**Monument Type:** Berntsen Top Security Rod Monument with a 2-1/2" dia. domed survey cap and permanent magnet encased in a white PVC pipe with a NGS style aluminum access cover.



*This document was prepared by Dan Corbin, Inc. on February 26, 2015 for Louisa County, Iowa*