

Louisa County, Iowa
 Horizontal Datum: **NAD 83(2011)** - Vertical Datum: **NAVD 1988**
 Iowa State Plane South Zone (1402)
 Iowa Regional Coordinate System Zone 14 Burlington TM
 US Survey Feet
2015

Point Name: **8**

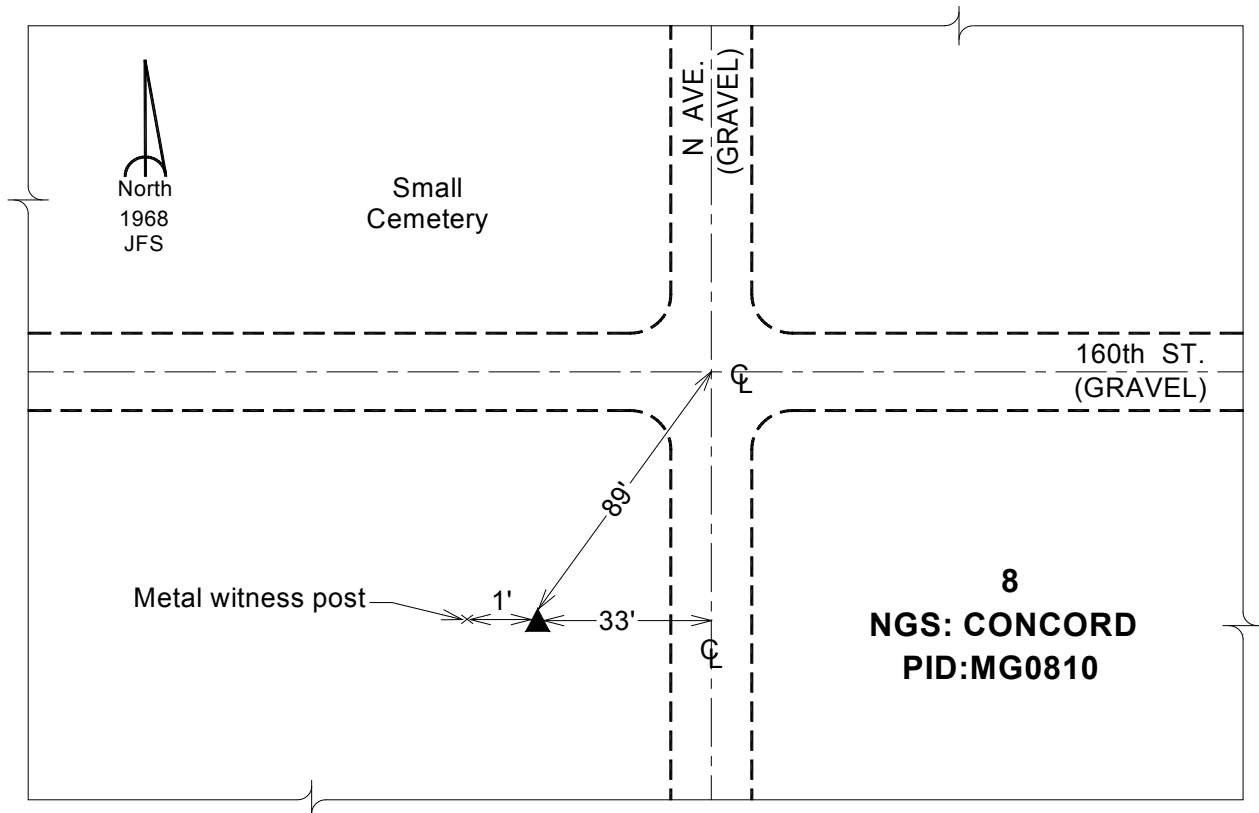
Designation: NGS 2nd order horiz control station "CONCORD" PID: MG0810

NAD 83(NA2011) Latitude: **N41°17'30.16418"** Longitude: **W91°15'14.97395"**
 NAVD 88 Ortho Height: **676.721** sft Ellip. Ht: **568.554**sft **Geoid12A**

Iowa South Zone (1402) Northing: **478579.887**sft Easting: **2257503.019**sft
 Mapping Angle: **1°28'46"** Combination Scale Factor: **0.999922493**

IaRCS Zone 14 Northing: **6579538.949**sft Easting: **24498856.914**sft
 Mapping Angle: **-00° 00' 10"** Combination Scale Factor: **0.999990768**

Monument Type: The station is a standard tablet stamped "CONCORD 1968" crimped on a 10ft length of copper clad rod driven flush with the ground and set in a tile filled with gravel.



This document was prepared by Dan Corbin, Inc. on February 26, 2015 for Louisa County, Iowa