

Louisa County, Iowa
 Horizontal Datum: **NAD 83(2011)** - Vertical Datum: **NAVD 1988**
 Iowa State Plane South Zone (1402)
 Iowa Regional Coordinate System Zone 14 Burlington TM
 US Survey Feet
2015

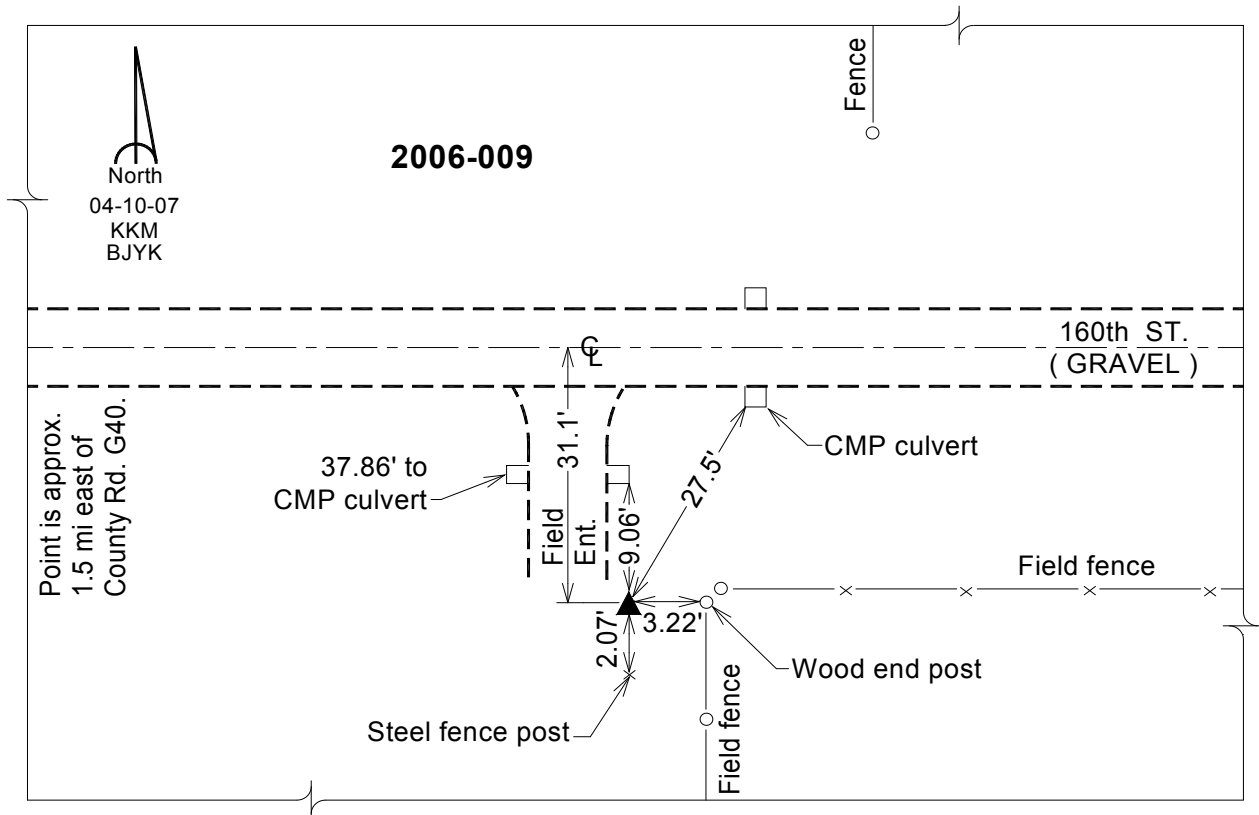
Point Name: **9**
Designation: 2006-009 Louisa Co GPS Control Pt.

NAD 83(NA2011) Latitude: **N41°17'30.38010"** Longitude: **W91°18'42.24690"**
 NAVD 88 Ortho Height: **601.990** sft Ellip. Ht: **493.879**sft **Geoid12A**

Iowa South Zone (1402) Northing: **478198.506**sft Easting: **2241685.826**sft
 Mapping Angle: **1°26'29"** Combination Scale Factor: **0.999926058**

IaRCS Zone 14 Northing: **6579566.808**sft Easting: **24483034.065**sft
 Mapping Angle: **-00° 02' 27"** Combination Scale Factor: **0.999994672**

Monument Type: Berntsen Top Security Rod Monument with a 2-1/2" dia. domed survey cap and permanent magnet encased in a white PVC pipe with a NGS style aluminum access cover.



This document was prepared by Dan Corbin, Inc. on February 26, 2015 for Louisa County, Iowa