

Louisa County, Iowa
Horizontal Datum: **NAD 83(2011)** - Vertical Datum: **NAVD 1988**
Iowa State Plane South Zone (1402)
Iowa Regional Coordinate System Zone 14 Burlington TM
US Survey Feet
2015

Point Name: **10**

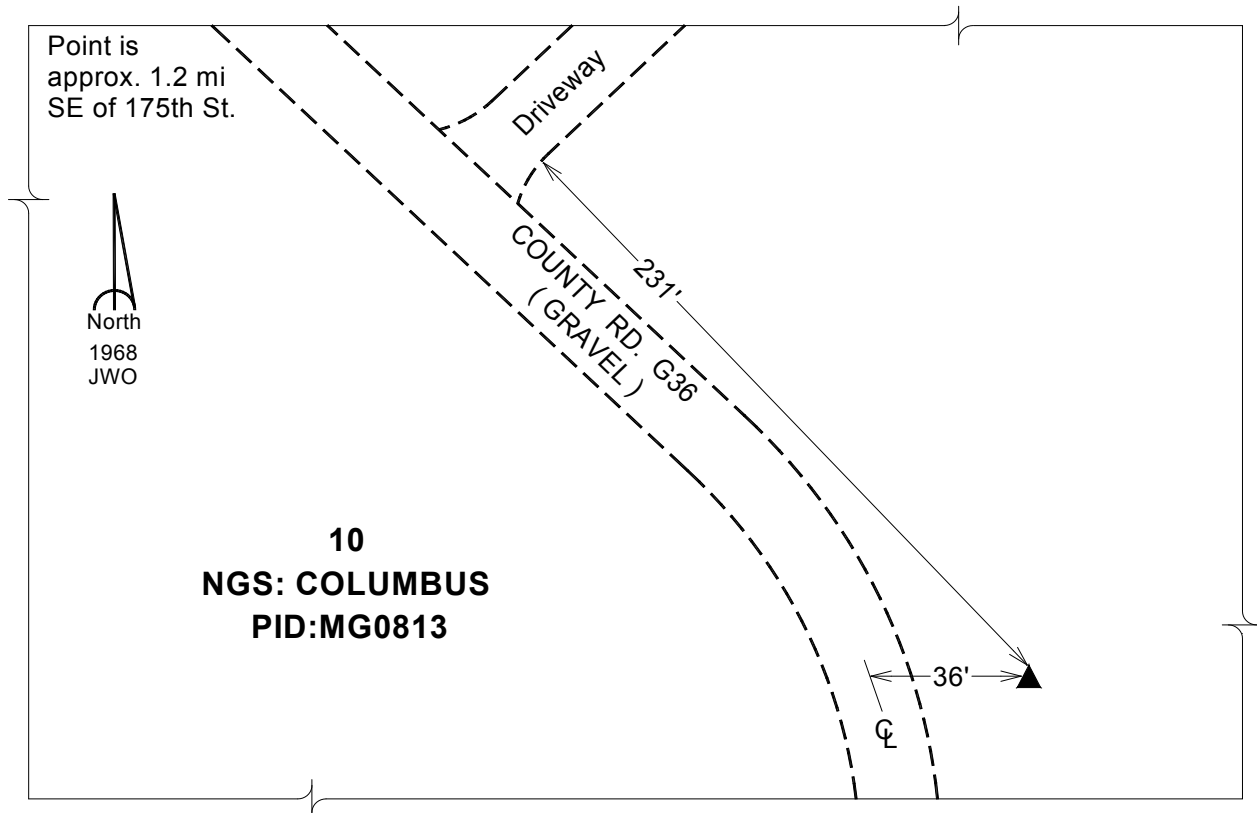
Designation: NGS 2nd order horiz control station "COLUMBUS" PID: MG0813

NAD 83(NA2011) Latitude: **N41°17'58.32758"** Longitude: **W91°22'07.13588"**
NAVD 88 Ortho Height: **710.120** sft Ellip. Ht: **602.100**sft **Geoid12A**

Iowa South Zone (1402) Northing: **480637.874**sft Easting: **2225981.555**sft
Mapping Angle: **1°24'14"** Combination Scale Factor: **0.999921118**

IaRCS Zone 14 Northing: **6582411.766**sft Easting: **24467397.067**sft
Mapping Angle: **-00° 04' 42"** Combination Scale Factor: **0.999990374**

Monument Type: The station is a standard tablet stamped "COLUMBUS 1968" crimped on a 10ft length of copper clad rod driven flush with the ground and set in a tile filled with gravel.



This document was prepared by Dan Corbin, Inc. on February 26, 2015 for Louisa County, Iowa