

**Louisa County, Iowa**  
Horizontal Datum: **NAD 83(2011)** - Vertical Datum: **NAVD 1988**  
Iowa State Plane South Zone (1402)  
Iowa Regional Coordinate System Zone 14 Burlington TM  
US Survey Feet  
**2015**

Point Name: **11**

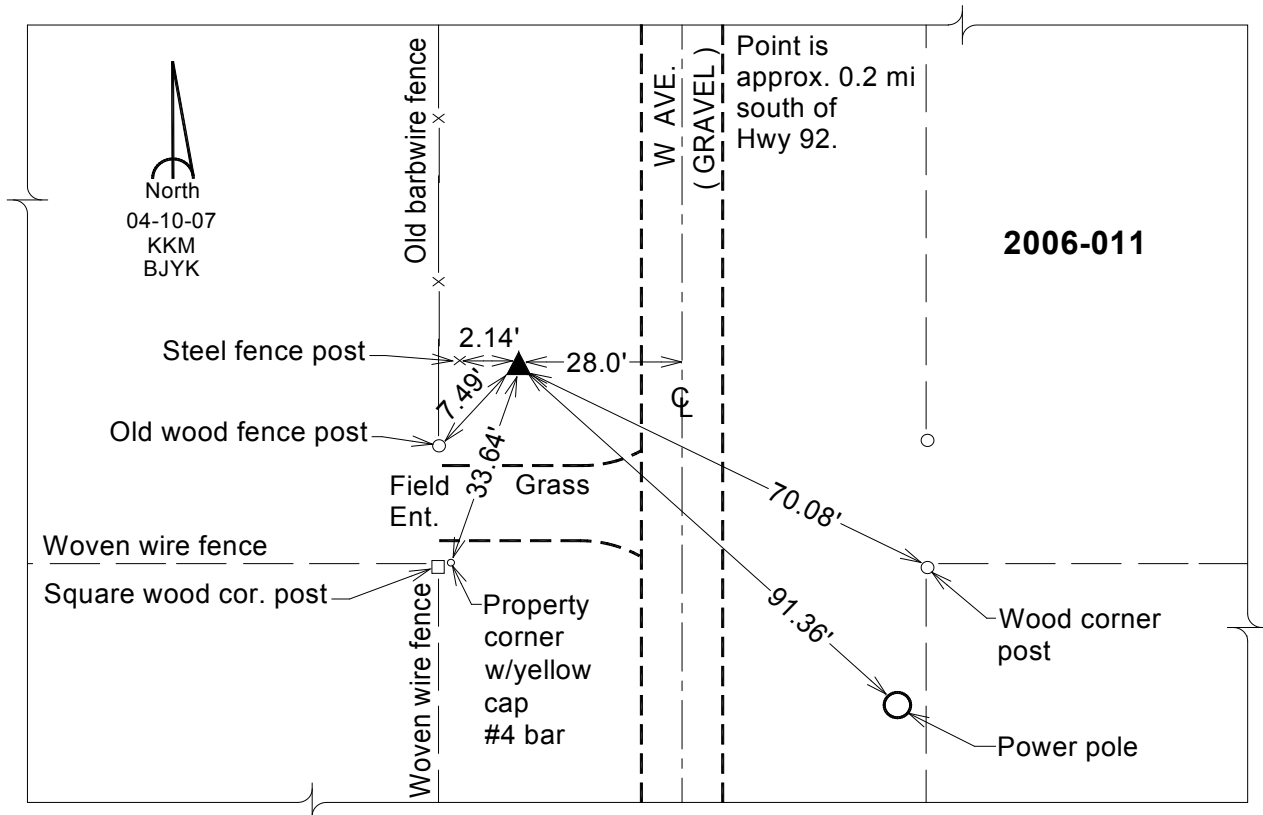
**Designation:** 2006-011 Louisa Co GPS Control Pt.

NAD 83(NA2011) Latitude: **N41°17'07.37933"** Longitude: **W91°25'53.54107"**  
NAVD 88 Ortho Height: **712.100** sft Ellip. Ht: **604.140**sft **Geoid12A**

Iowa South Zone (1402) Northing: **475065.821**sft Easting: **2208829.055**sft  
Mapping Angle: **1°21'45"** Combination Scale Factor: **0.999920627**

IaRCS Zone 14 Northing: **6577284.907**sft Easting: **24450104.955**sft  
Mapping Angle: **-00° 07' 11"** Combination Scale Factor: **0.999991907**

**Monument Type:** Berntsen Top Security Rod Monument with a 2-1/2" dia. domed survey cap and permanent magnet encased in a white PVC pipe with a NGS style aluminum access cover.



*This document was prepared by Dan Corbin, Inc. on February 26, 2015 for Louisa County, Iowa*