

Louisa County, Iowa
 Horizontal Datum: **NAD 83(2011)** - Vertical Datum: **NAVD 1988**
 Iowa State Plane South Zone (1402)
 Iowa Regional Coordinate System Zone 14 Burlington TM
 US Survey Feet
2015

Point Name: **12**

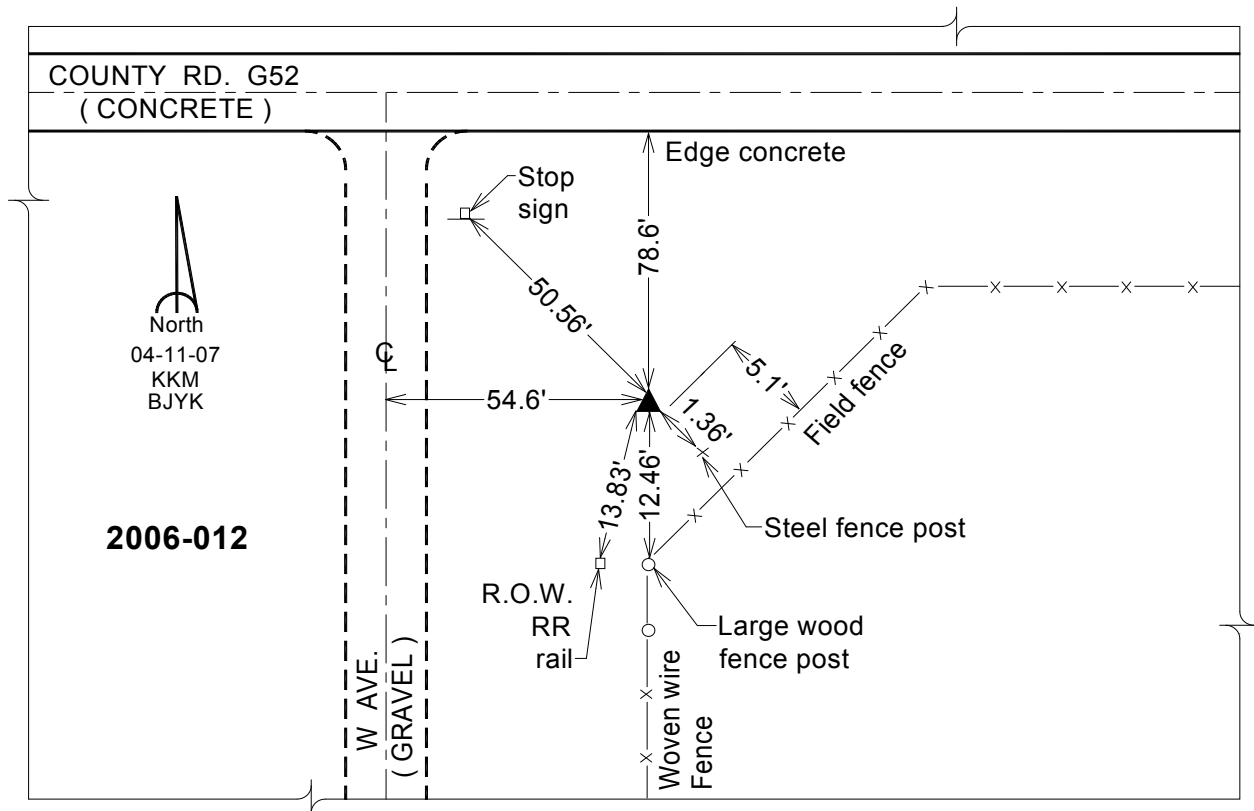
Designation: 2006-012 Louisa Co GPS Control Pt.

NAD 83(NA2011) Latitude: **N41°14'55.18694"** Longitude: **W91°25'40.06822"**
 NAVD 88 Ortho Height: **646.740** sft Ellip. Ht: **538.671**sft **Geoid12A**

Iowa South Zone (1402) Northing: **461715.207**sft Easting: **2210175.983**sft
 Mapping Angle: **1°21'54"** Combination Scale Factor: **0.999923014**

IaRCS Zone 14 Northing: **6563902.959**sft Easting: **24451106.165**sft
 Mapping Angle: **-00° 07' 02"** Combination Scale Factor: **0.999994930**

Monument Type: Berntsen Top Security Rod Monument with a 2-1/2" dia. domed survey cap and permanent magnet encased in a white PVC pipe with a NGS style aluminum access cover.



This document was prepared by Dan Corbin, Inc. on February 26, 2015 for Louisa County, Iowa