

**Louisa County, Iowa**  
Horizontal Datum: **NAD 83(2011)** - Vertical Datum: **NAVD 1988**  
Iowa State Plane South Zone (1402)  
Iowa Regional Coordinate System Zone 14 Burlington TM  
US Survey Feet  
**2015**

Point Name: **13**

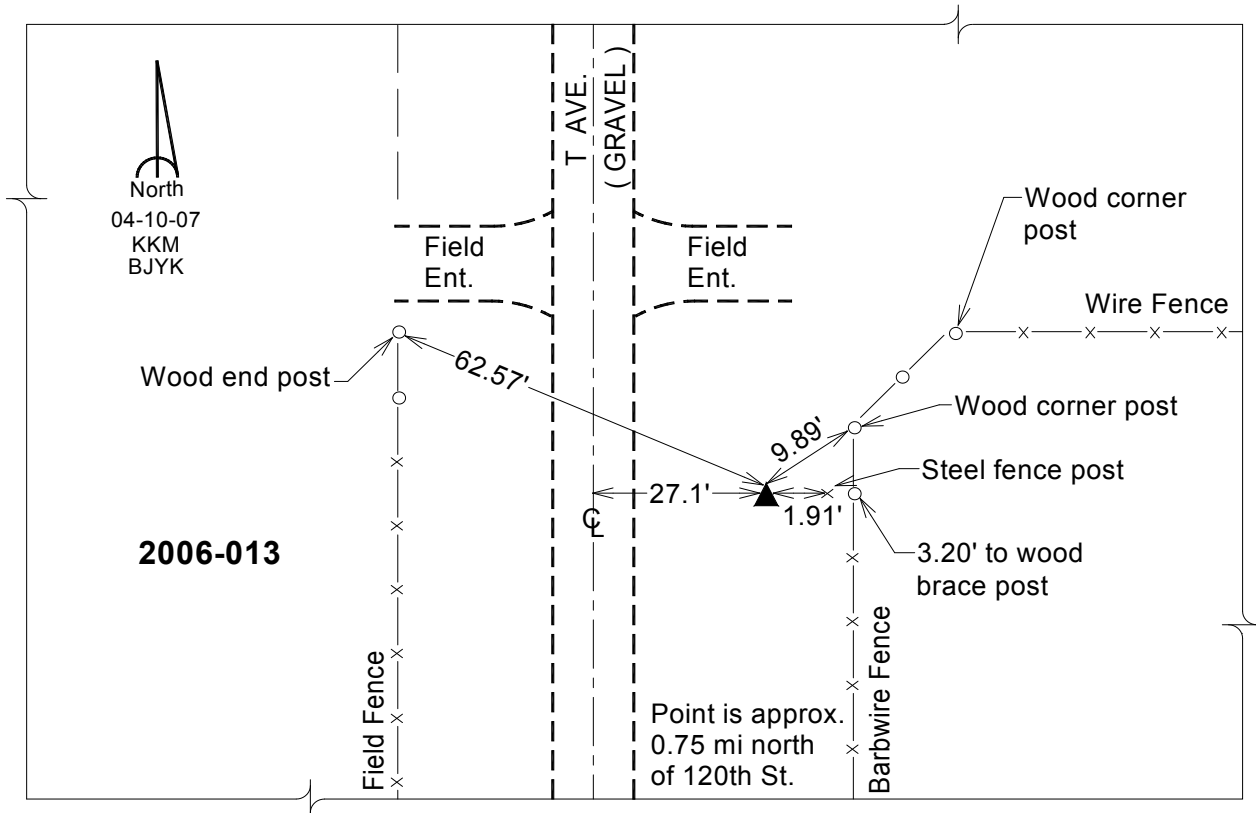
**Designation:** 2012-013 RESET Louisa Co GPS Control Pt.

NAD 83(NA2011) Latitude: **N41°14'40.54236"** Longitude: **W91°22'11.21650"**  
NAVD 88 Ortho Height: **724.378** sft Ellip. Ht: **616.234**sft **Geoid12A**

Iowa South Zone (1402) Northing: **460618.839**sft Easting: **2226160.378**sft  
Mapping Angle: **1°24'11"** Combination Scale Factor: **0.999919256**

IaRCS Zone 14 Northing: **6562393.401**sft Easting: **24467057.990**sft  
Mapping Angle: **-00° 04' 44"** Combination Scale Factor: **0.999989723**

**Monument Type:** Berntsen Top Security Rod Monument with a 2-1/2" dia. domed survey cap and permanent magnet encased in a white PVC pipe with a NGS style aluminum access cover.



*This document was prepared by Dan Corbin, Inc. on February 26, 2015 for Louisa County, Iowa*