

**Louisa County, Iowa**  
Horizontal Datum: **NAD 83(2011)** - Vertical Datum: **NAVD 1988**  
Iowa State Plane South Zone (1402)  
Iowa Regional Coordinate System Zone 14 Burlington TM  
US Survey Feet  
**2015**

Point Name: **14**

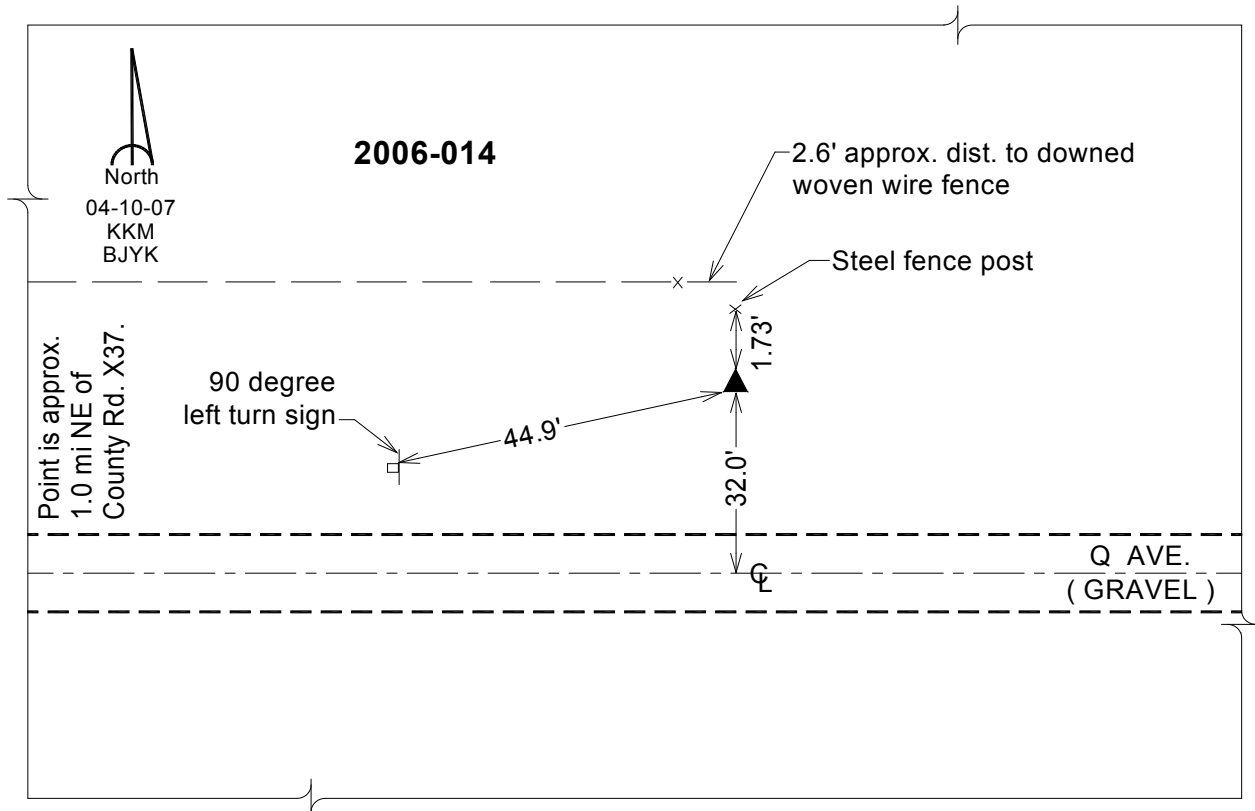
**Designation:** 2006-014 Louisa Co GPS Control Pt.

NAD 83(NA2011) Latitude: **N41°15'07.46577"** Longitude: **W91°19'24.55277"**  
NAVD 88 Ortho Height: **713.650** sft Ellip. Ht: **605.457**sft **Geoid12A**

Iowa South Zone (1402) Northing: **463657.973**sft Easting: **2238819.394**sft  
Mapping Angle: **1°26'01"** Combination Scale Factor: **0.999919878**

IaRCS Zone 14 Northing: **6565104.280**sft Easting: **24479792.272**sft  
Mapping Angle: **-00° 02' 54"** Combination Scale Factor: **0.999989465**

**Monument Type:** Berntsen Top Security Rod Monument with a 2-1/2" dia. domed survey cap and permanent magnet encased in a white PVC pipe with a NGS style aluminum access cover.



*This document was prepared by Dan Corbin, Inc. on February 26, 2015 for Louisa County, Iowa*