

Louisa County, Iowa
 Horizontal Datum: **NAD 83(2011)** - Vertical Datum: **NAVD 1988**
 Iowa State Plane South Zone (1402)
 Iowa Regional Coordinate System Zone 14 Burlington TM
 US Survey Feet
2015

Point Name: **15**

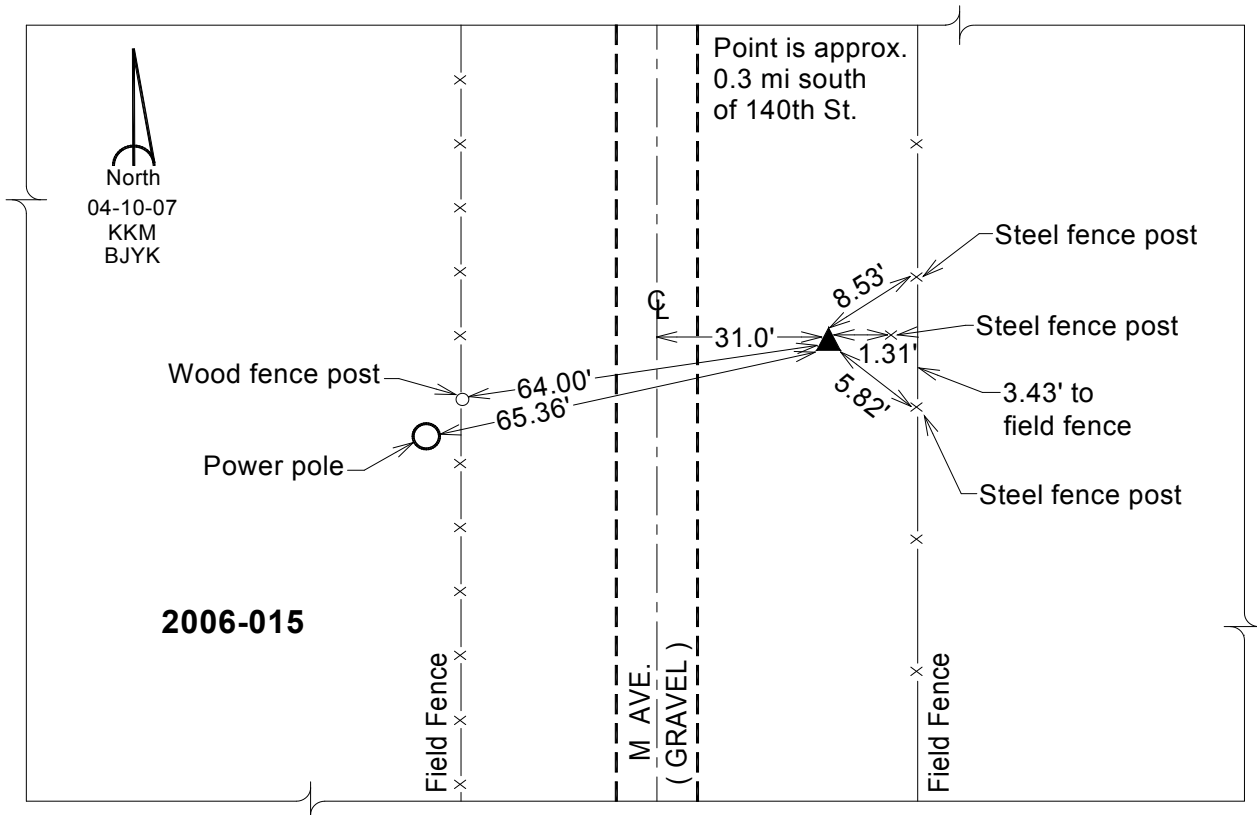
Designation: 2006-015 Louisa Co GPS Control Pt.

NAD 83(NA2011) Latitude: **N41°15'02.83227"** Longitude: **W91°14'55.32894"**
 NAVD 88 Ortho Height: **589.170** sft Ellip. Ht: **480.870**sft **Geoid12A**

Iowa South Zone (1402) Northing: **463712.505**sft Easting: **2259387.970**sft
 Mapping Angle: **1°28'59"** Combination Scale Factor: **0.999925803**

IaRCS Zone 14 Northing: **6564626.761**sft Easting: **24500356.804**sft
 Mapping Angle: **00° 00' 03"** Combination Scale Factor: **0.999994966**

Monument Type: Berntsen Top Security Rod Monument with a 2-1/2" dia. domed survey cap and permanent magnet encased in a white PVC pipe with a NGS style aluminum access cover.



This document was prepared by Dan Corbin, Inc. on February 26, 2015 for Louisa County, Iowa