

**Louisa County, Iowa**  
Horizontal Datum: **NAD 83(2011)** - Vertical Datum: **NAVD 1988**  
Iowa State Plane South Zone (1402)  
Iowa Regional Coordinate System Zone 14 Burlington TM  
US Survey Feet  
**2015**

Point Name: **16**

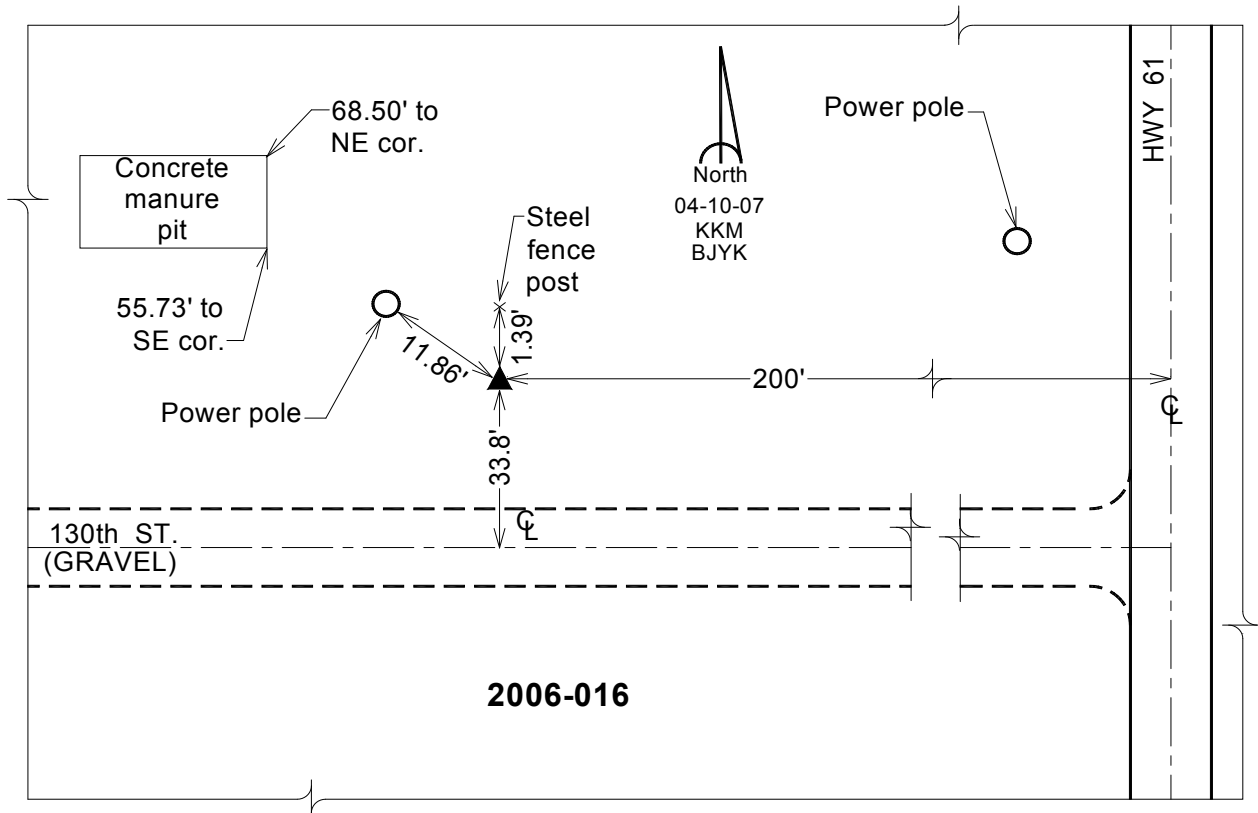
**Designation:** 2006-016 Louisa Co GPS Control Pt.

NAD 83(NA2011) Latitude: **N41°14'51.22142"** Longitude: **W91°11'53.26256"**  
NAVD 88 Ortho Height: **634.570** sft Ellip. Ht: **526.244**sft **Geoid12A**

Iowa South Zone (1402) Northing: **462901.739**sft Easting: **2273320.658**sft  
Mapping Angle: **1°30'58"** Combination Scale Factor: **0.999923591**

IaRCS Zone 14 Northing: **6563455.831**sft Easting: **24514264.825**sft  
Mapping Angle: **00° 02' 03"** Combination Scale Factor: **0.999993025**

**Monument Type:** Berntsen Top Security Rod Monument with a 2-1/2" dia. domed survey cap and permanent magnet encased in a white PVC pipe with a NGS style aluminum access cover.



*This document was prepared by Dan Corbin, Inc. on February 26, 2015 for Louisa County, Iowa*