

Louisa County, Iowa
Horizontal Datum: **NAD 83(2011)** - Vertical Datum: **NAVD 1988**
Iowa State Plane South Zone (1402)
Iowa Regional Coordinate System Zone 14 Burlington TM
US Survey Feet
2015

Point Name: **18**

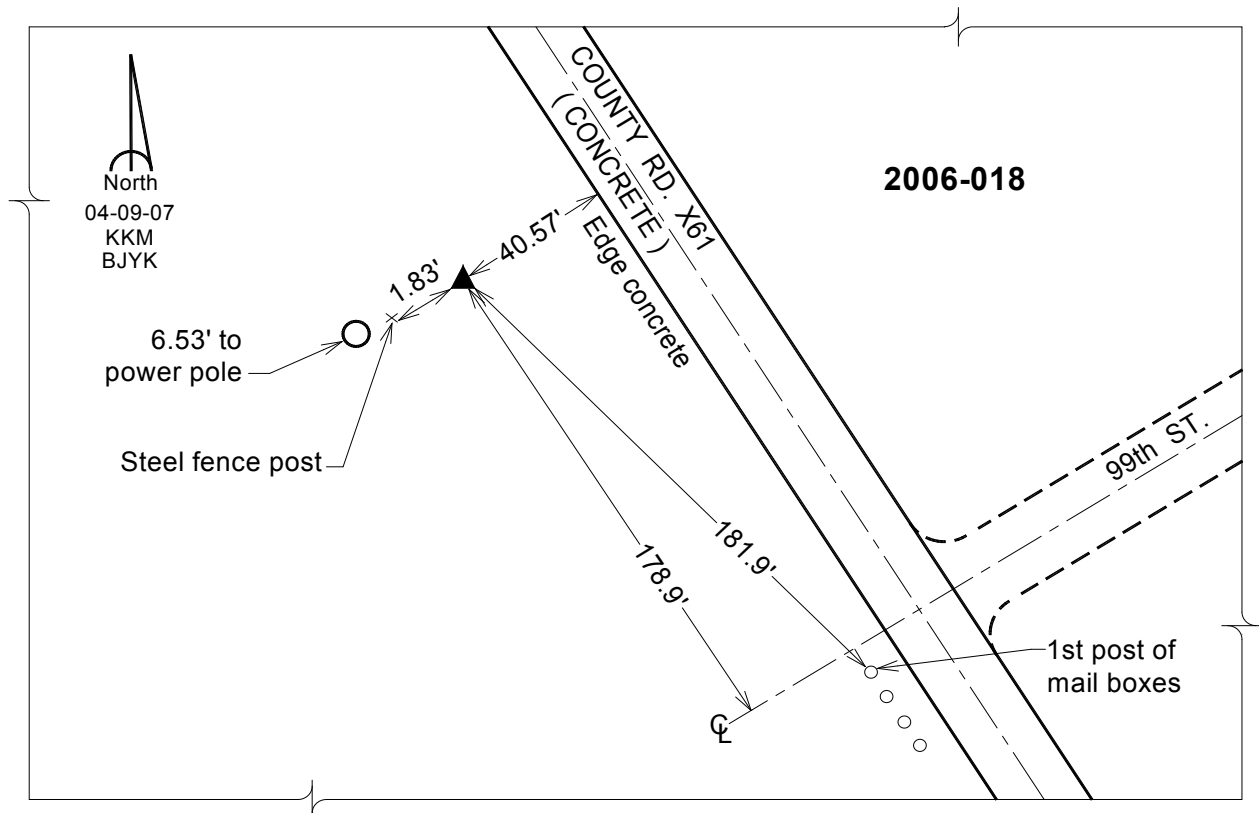
Designation: 2006-018 Louisa Co GPS Control Pt.

NAD 83(NA2011) Latitude: **N41°12'08.57170"** Longitude: **W91°07'13.77217"**
NAVD 88 Ortho Height: **666.780** sft Ellip. Ht: **558.347**sft **Geoid12A**

Iowa South Zone (1402) Northing: **447021.042**sft Easting: **2295111.905**sft
Mapping Angle: **1°34'03"** Combination Scale Factor: **0.999921728**

IaRCS Zone 14 Northing: **6547015.686**sft Easting: **24535639.550**sft
Mapping Angle: **00° 05' 07"** Combination Scale Factor: **0.999992707**

Monument Type: Berntsen Top Security Rod Monument with a 2-1/2" dia. domed survey cap and permanent magnet encased in a white PVC pipe with a NGS style aluminum access cover.



This document was prepared by Dan Corbin, Inc. on February 26, 2015 for Louisa County, Iowa