

Louisa County, Iowa
 Horizontal Datum: **NAD 83(2011)** - Vertical Datum: **NAVD 1988**
 Iowa State Plane South Zone (1402)
 Iowa Regional Coordinate System Zone 14 Burlington TM
 US Survey Feet
2015

Point Name: **19**

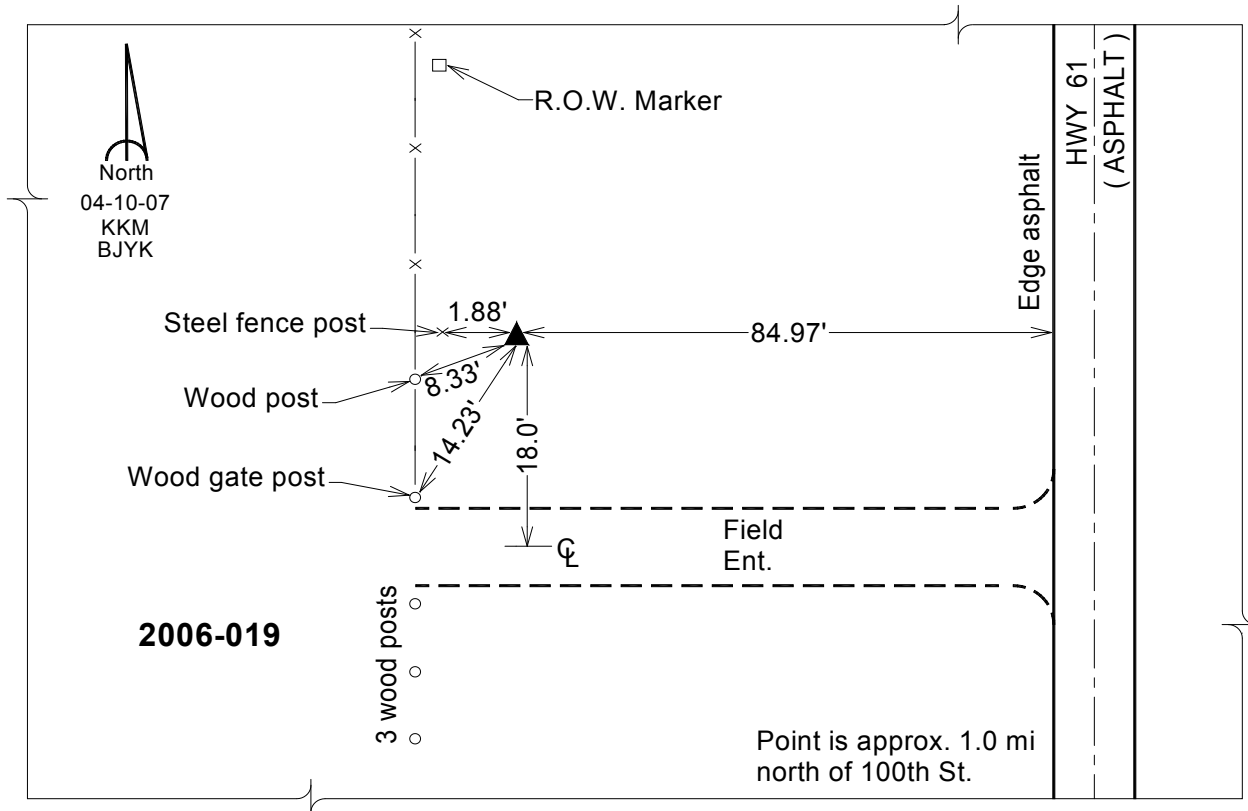
Designation: 2006-019 Louisa Co GPS Control Pt.

NAD 83(NA2011) Latitude: **N41°12'13.84488"** Longitude: **W91°11'52.96670"**
 NAVD 88 Ortho Height: **562.940** sft Ellip. Ht: **454.479**sft **Geoid12A**

Iowa South Zone (1402) Northing: **446980.319**sft Easting: **2273764.713**sft
 Mapping Angle: **1°30'59"** Combination Scale Factor: **0.999926685**

IaRCS Zone 14 Northing: **6547527.141**sft Easting: **24514296.945**sft
 Mapping Angle: **00° 02' 03"** Combination Scale Factor: **0.999996464**

Monument Type: Berntsen Top Security Rod Monument with a 2-1/2" dia. domed survey cap and permanent magnet encased in a white PVC pipe with a NGS style aluminum access cover.



This document was prepared by Dan Corbin, Inc. on February 26, 2015 for Louisa County, Iowa