

Louisa County, Iowa
Horizontal Datum: **NAD 83(2011)** - Vertical Datum: **NAVD 1988**
Iowa State Plane South Zone (1402)
Iowa Regional Coordinate System Zone 14 Burlington TM
US Survey Feet
2015

Point Name: **21**

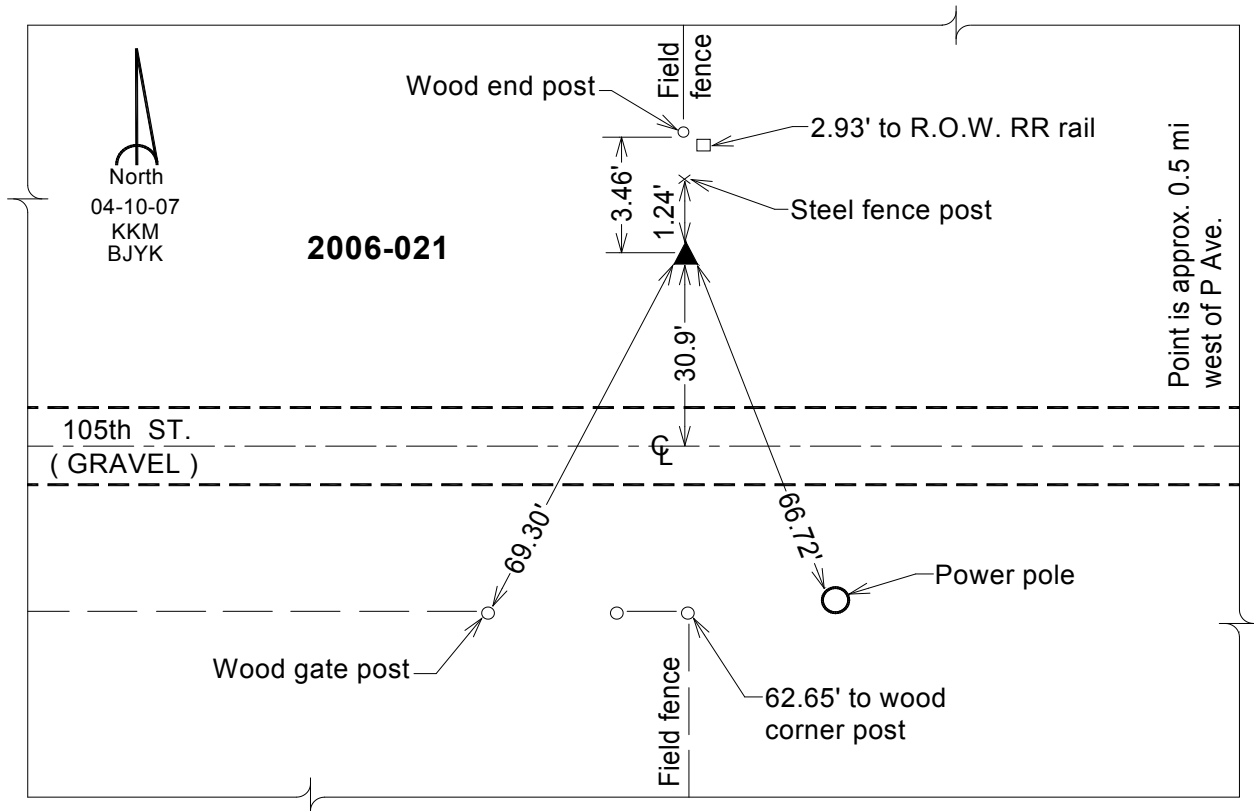
Designation: 2006-021 Louisa Co GPS Control Pt.

NAD 83(NA2011) Latitude: **N41°12'45.08102"** Longitude: **W91°18'46.27833"**
NAVD 88 Ortho Height: **654.600** sft Ellip. Ht: **546.273**sft **Geoid12A**

Iowa South Zone (1402) Northing: **449325.509**sft Easting: **2242104.148**sft
Mapping Angle: **1°26'26"** Combination Scale Factor: **0.999922325**

IaRCS Zone 14 Northing: **6550690.645**sft Easting: **24482705.425**sft
Mapping Angle: **-00° 02' 29"** Combination Scale Factor: **0.999992175**

Monument Type: Berntsen Top Security Rod Monument with a 2-1/2" dia. domed survey cap and permanent magnet encased in a white PVC pipe with a NGS style aluminum access cover.



This document was prepared by Dan Corbin, Inc. on February 26, 2015 for Louisa County, Iowa