

Louisa County, Iowa
Horizontal Datum: **NAD 83(2011)** - Vertical Datum: **NAVD 1988**
Iowa State Plane South Zone (1402)
Iowa Regional Coordinate System Zone 14 Burlington TM
US Survey Feet
2015

Point Name: **22**

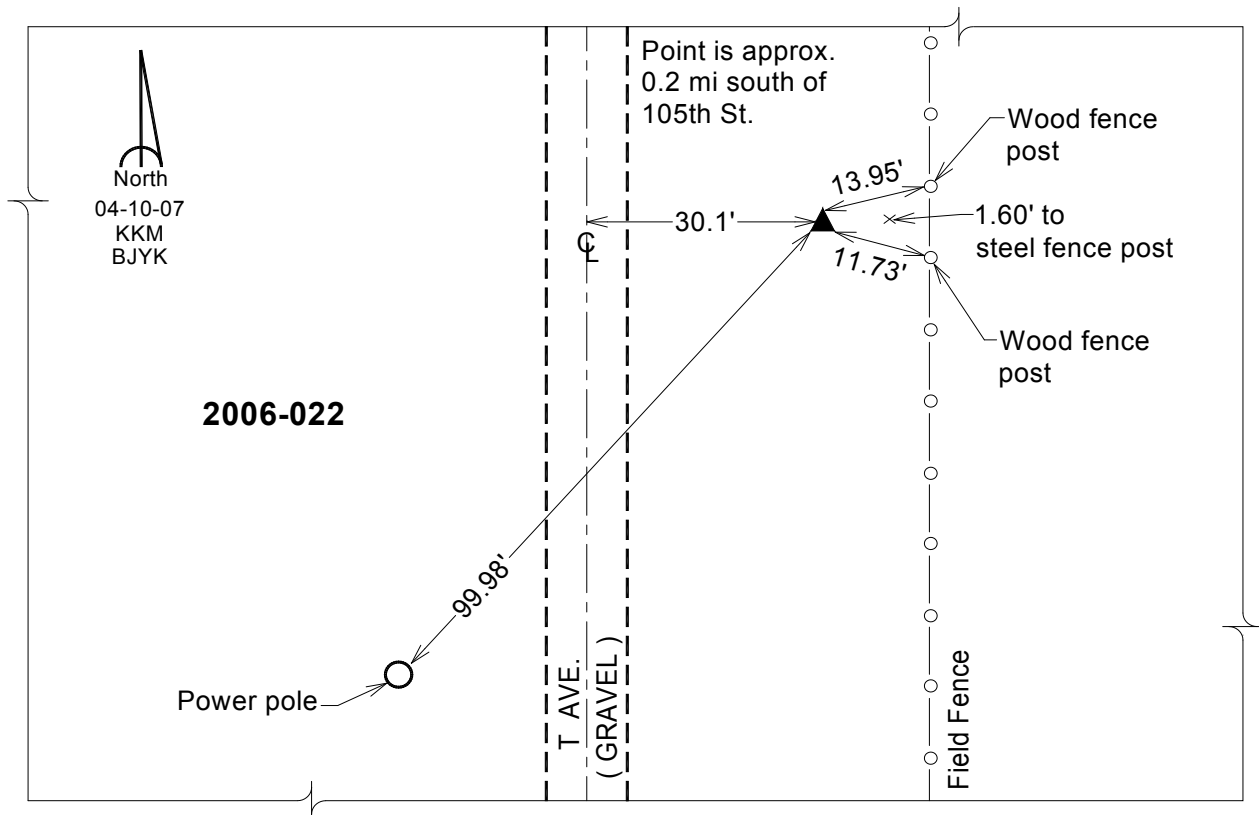
Designation: 2006-022 Louisa Co GPS Control Pt.

NAD 83(NA2011) Latitude: **N41°12'23.90054"** Longitude: **W91°22'12.28464"**
NAVD 88 Ortho Height: **685.020** sft Ellip. Ht: **576.757**sft **Geoid12A**

Iowa South Zone (1402) Northing: **446791.889**sft Easting: **2226417.404**sft
Mapping Angle: **1°24'11"** Combination Scale Factor: **0.999920855**

IaRCS Zone 14 Northing: **6548563.451**sft Easting: **24466957.289**sft
Mapping Angle: **-00° 04' 45"** Combination Scale Factor: **0.999991621**

Monument Type: Berntsen Top Security Rod Monument with a 2-1/2" dia. domed survey cap and permanent magnet encased in a white PVC pipe with a NGS style aluminum access cover.



This document was prepared by Dan Corbin, Inc. on February 26, 2015 for Louisa County, Iowa