

Louisa County, Iowa
 Horizontal Datum: **NAD 83(2011)** - Vertical Datum: **NAVD 1988**
 Iowa State Plane South Zone (1402)
 Iowa Regional Coordinate System Zone 14 Burlington TM
 US Survey Feet
2015

Point Name: **25**

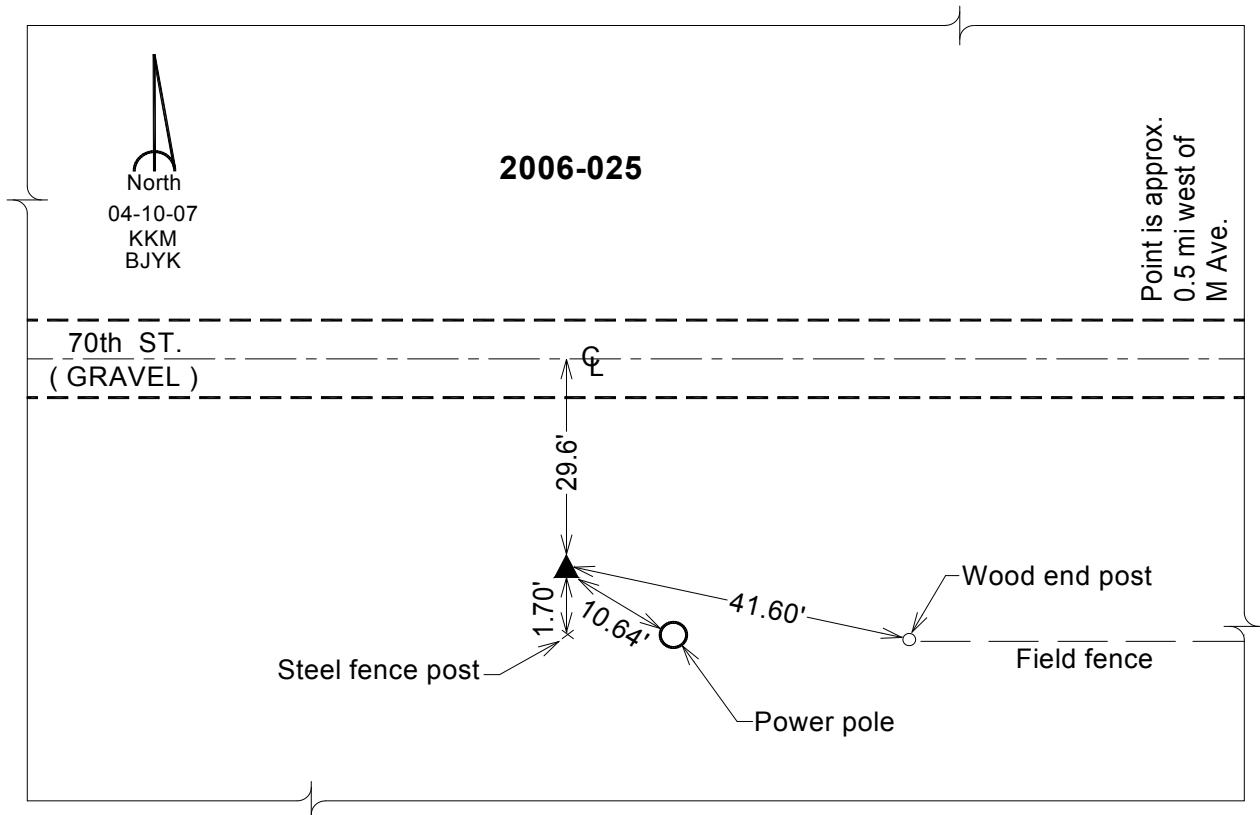
Designation: 2012-025 RESET Louisa Co GPS Control Pt.

NAD 83(NA2011) Latitude: **N41°09'40.09963"** Longitude: **W91°15'18.23066"**
 NAVD 88 Ortho Height: **594.969** sft Ellip. Ht: **486.449**sft **Geoid12A**

Iowa South Zone (1402) Northing: **431015.513**sft Easting: **2258482.198**sft
 Mapping Angle: **1°28'43"** Combination Scale Factor: **0.999925398**

IaRCS Zone 14 Northing: **6531961.864**sft Easting: **24498605.531**sft
 Mapping Angle: **-00° 00' 12"** Combination Scale Factor: **0.999994701**

Monument Type: Berntsen Top Security Rod Monument with a 2-1/2" dia. domed survey cap and permanent magnet encased in a white PVC pipe with a NGS style aluminum access cover.



This document was prepared by Dan Corbin, Inc. on February 26, 2015 for Louisa County, Iowa