

Louisa County, Iowa
Horizontal Datum: **NAD 83(2011)** - Vertical Datum: **NAVD 1988**
Iowa State Plane South Zone (1402)
Iowa Regional Coordinate System Zone 14 Burlington TM
US Survey Feet
2015

Point Name: **26**

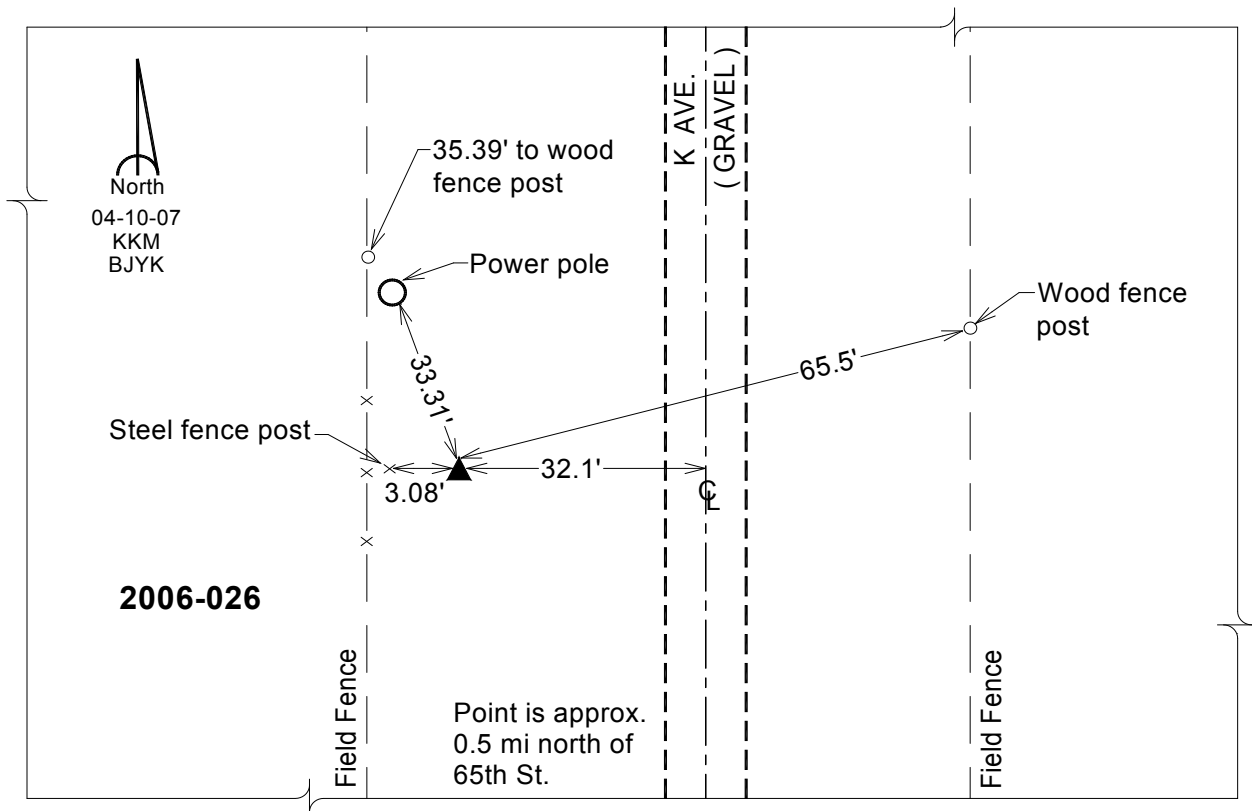
Designation: 2006-026 Louisa Co GPS Control Pt.

NAD 83(NA2011) Latitude: **N41°09'40.51140"** Longitude: **W91°11'49.76361"**
NAVD 88 Ortho Height: **580.310** sft Ellip. Ht: **471.759**sft **Geoid12A**

Iowa South Zone (1402) Northing: **431473.945**sft Easting: **2274420.250**sft
Mapping Angle: **1°31'01"** Combination Scale Factor: **0.999926098**

IaRCS Zone 14 Northing: **6532007.916**sft Easting: **24514551.216**sft
Mapping Angle: **00° 02' 05"** Combination Scale Factor: **0.999995644**

Monument Type: Berntsen Top Security Rod Monument with a 2-1/2" dia. domed survey cap and permanent magnet encased in a white PVC pipe with a NGS style aluminum access cover.



This document was prepared by Dan Corbin, Inc. on February 26, 2015 for Louisa County, Iowa