

**Louisa County, Iowa**  
Horizontal Datum: **NAD 83(2011)** - Vertical Datum: **NAVD 1988**  
Iowa State Plane South Zone (1402)  
Iowa Regional Coordinate System Zone 14 Burlington TM  
US Survey Feet  
**2015**

Point Name: **27**

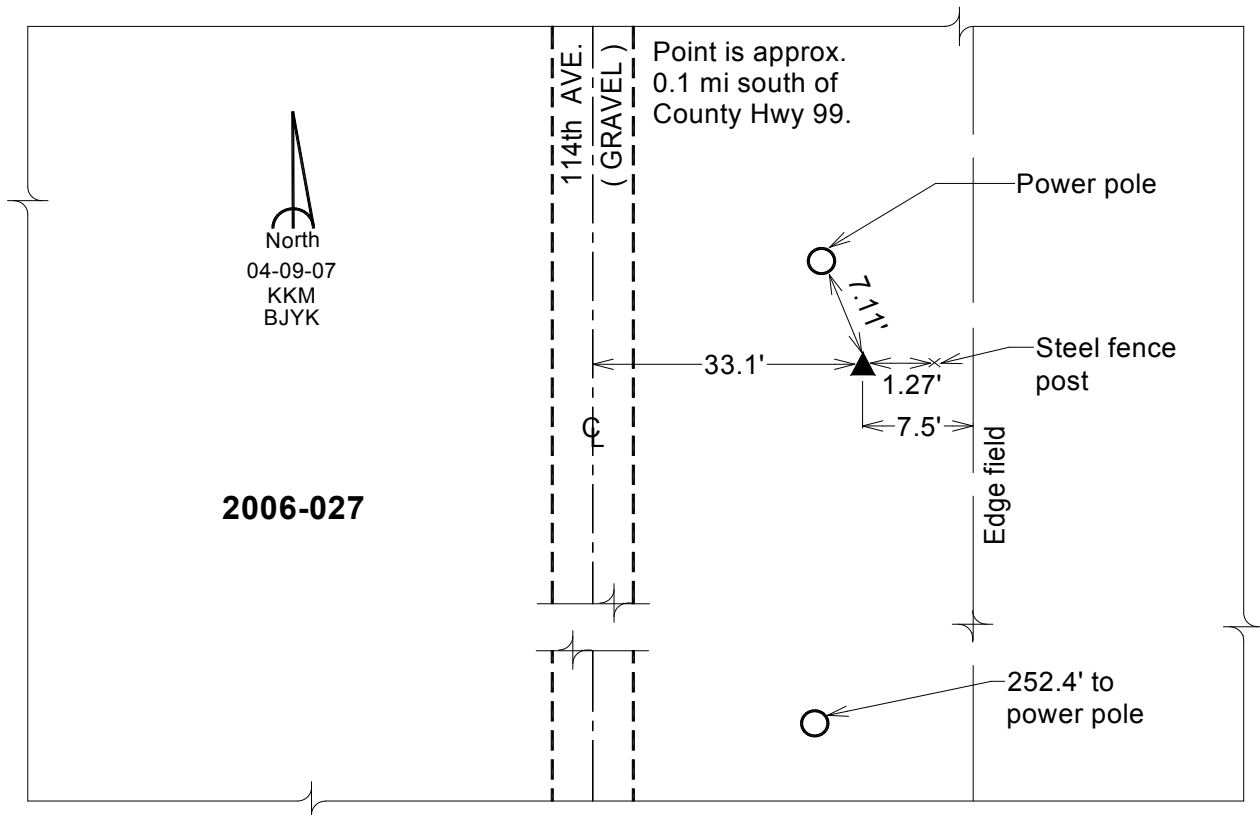
**Designation:** 2006-027 Louisa Co GPS Control Pt.

NAD 83(NA2011) Latitude: **N41°10'07.80496"** Longitude: **W91°08'50.13661"**  
NAVD 88 Ortho Height: **559.000** sft Ellip. Ht: **450.474**sft **Geoid12A**

Iowa South Zone (1402) Northing: **434602.828**sft Easting: **2288079.373**sft  
Mapping Angle: **1°32'59"** Combination Scale Factor: **0.999927031**

IaRCS Zone 14 Northing: **6534782.655**sft Easting: **24528287.658**sft  
Mapping Angle: **00° 04' 03"** Combination Scale Factor: **0.999997336**

**Monument Type:** Berntsen Top Security Rod Monument with a 2-1/2" dia. domed survey cap and permanent magnet encased in a white PVC pipe with a NGS style aluminum access cover.



*This document was prepared by Dan Corbin, Inc. on February 26, 2015 for Louisa County, Iowa*