

Louisa County, Iowa
Horizontal Datum: **NAD 83(2011)** - Vertical Datum: **NAVD 1988**
Iowa State Plane South Zone (1402)
Iowa Regional Coordinate System Zone 14 Burlington TM
US Survey Feet
2015

Point Name: **28**

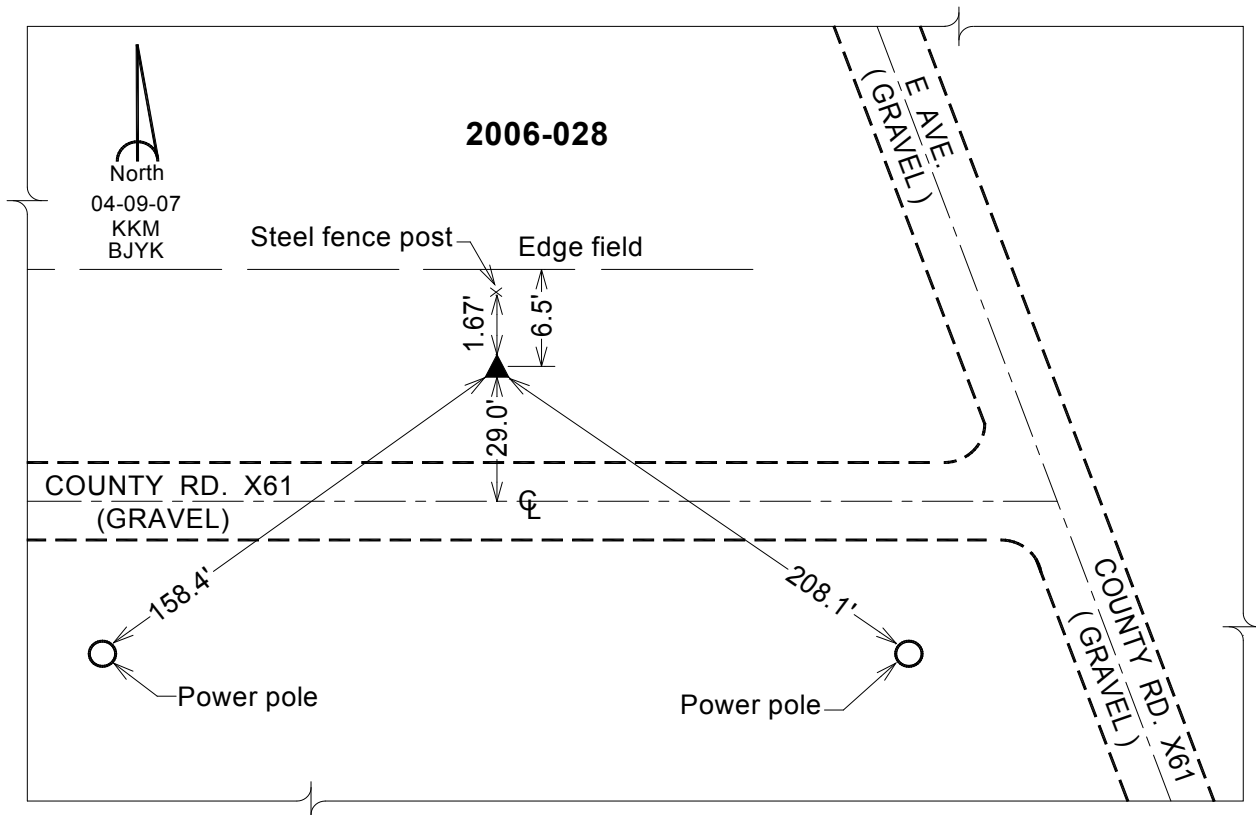
Designation: 2006-028 Louisa Co GPS Control Pt.

NAD 83(NA2011) Latitude: **N41°10'02.71730"** Longitude: **W91°05'26.07027"**
NAVD 88 Ortho Height: **638.300** sft Ellip. Ht: **529.817**sft **Geoid12A**

Iowa South Zone (1402) Northing: **434515.277**sft Easting: **2303693.974**sft
Mapping Angle: **1°35'14"** Combination Scale Factor: **0.999923259**

IaRCS Zone 14 Northing: **6534291.223**sft Easting: **24543895.878**sft
Mapping Angle: **00° 06' 18"** Combination Scale Factor: **0.999994823**

Monument Type: Berntsen Top Security Rod Monument with a 2-1/2" dia. domed survey cap and permanent magnet encased in a white PVC pipe with a NGS style aluminum access cover.



This document was prepared by Dan Corbin, Inc. on February 26, 2015 for Louisa County, Iowa