

**Louisa County, Iowa**  
Horizontal Datum: **NAD 83(2011)** - Vertical Datum: **NAVD 1988**  
Iowa State Plane South Zone (1402)  
Iowa Regional Coordinate System Zone 14 Burlington TM  
US Survey Feet  
**2015**

Point Name: **29**

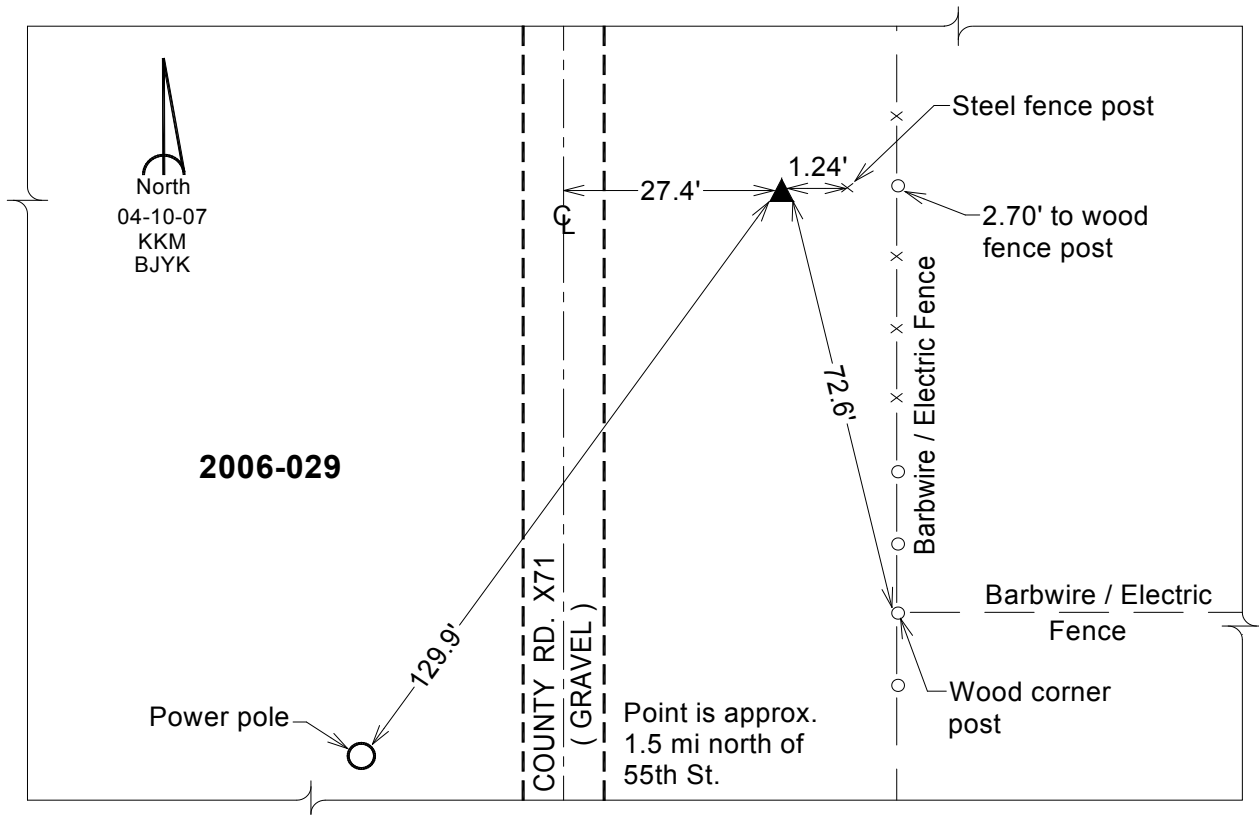
**Designation:** 2006-029 Louisa Co GPS Control Pt.

NAD 83(NA2011) Latitude: **N41°09'29.18573"** Longitude: **W91°00'51.64251"**  
NAVD 88 Ortho Height: **534.000** sft Ellip. Ht: **425.567**sft **Geoid12A**

Iowa South Zone (1402) Northing: **431713.546**sft Easting: **2324770.231**sft  
Mapping Angle: **1°38'14"** Combination Scale Factor: **0.999928341**

IaRCS Zone 14 Northing: **6530945.028**sft Easting: **24564894.143**sft  
Mapping Angle: **00° 09' 18"** Combination Scale Factor: **1.000002428**

**Monument Type:** Berntsen Top Security Rod Monument with a 2-1/2" dia. domed survey cap and permanent magnet encased in a white PVC pipe with a NGS style aluminum access cover.



*This document was prepared by Dan Corbin, Inc. on February 26, 2015 for Louisa County, Iowa*