

Louisa County, Iowa
 Horizontal Datum: **NAD 83(2011)** - Vertical Datum: **NAVD 1988**
 Iowa State Plane South Zone (1402)
 Iowa Regional Coordinate System Zone 14 Burlington TM
 US Survey Feet
2015

Point Name: **30**

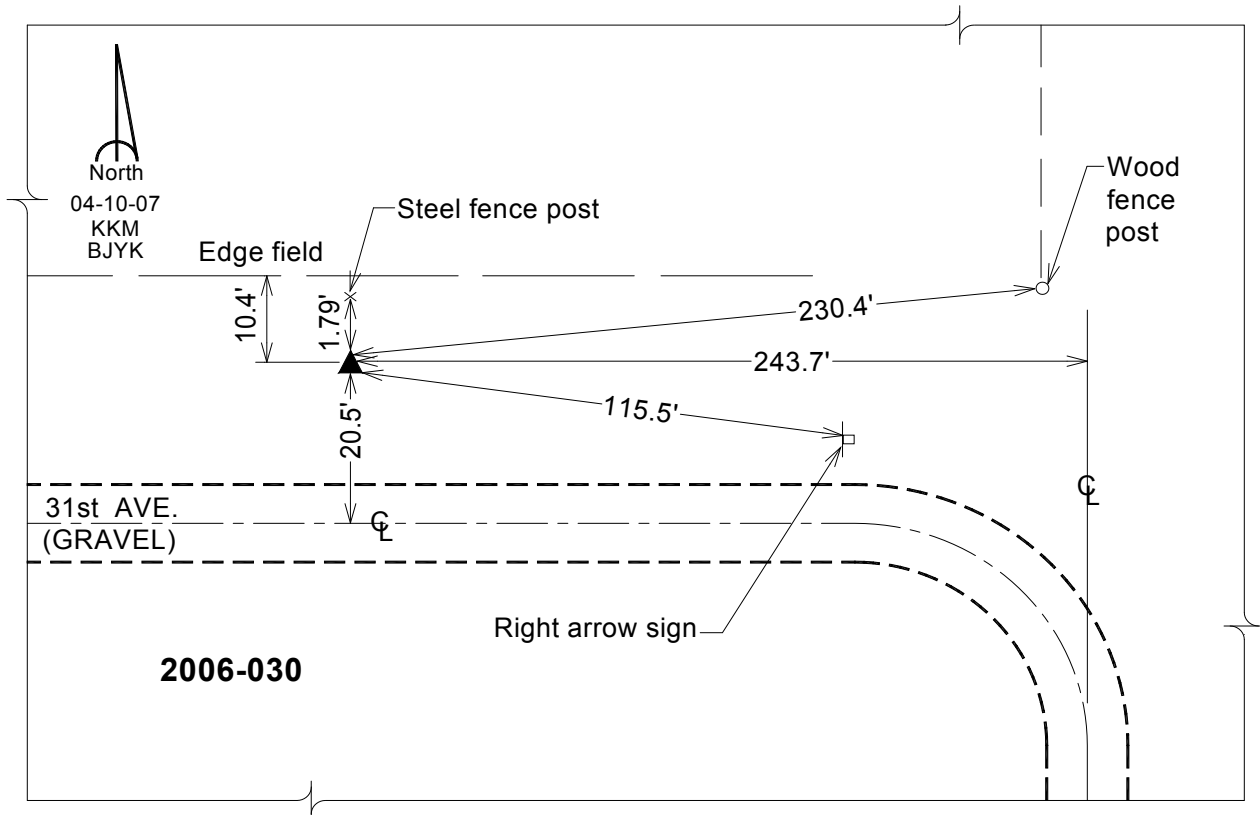
Designation: 2006-030 Louisa Co GPS Control Pt.

NAD 83(NA2011) Latitude: **N41°07'40.53981"** Longitude: **W90°59'12.31422"**
 NAVD 88 Ortho Height: **529.100 sft** Ellip. Ht: **420.654sft** **Geoid12A**

Iowa South Zone (1402) Northing: **420940.853sft** Easting: **2332682.226sft**
 Mapping Angle: **1°39'20"** Combination Scale Factor: **0.999929105**

IaRCS Zone 14 Northing: **6519970.458sft** Easting: **24572525.396sft**
 Mapping Angle: **00° 10' 23"** Combination Scale Factor: **1.000003861**

Monument Type: Berntsen Top Security Rod Monument with a 2-1/2" dia. domed survey cap and permanent magnet encased in a white PVC pipe with a NGS style aluminum access cover.



This document was prepared by Dan Corbin, Inc. on February 26, 2015 for Louisa County, Iowa