

Louisa County, Iowa
Horizontal Datum: **NAD 83(2011)** - Vertical Datum: **NAVD 1988**
Iowa State Plane South Zone (1402)
Iowa Regional Coordinate System Zone 14 Burlington TM
US Survey Feet
2015

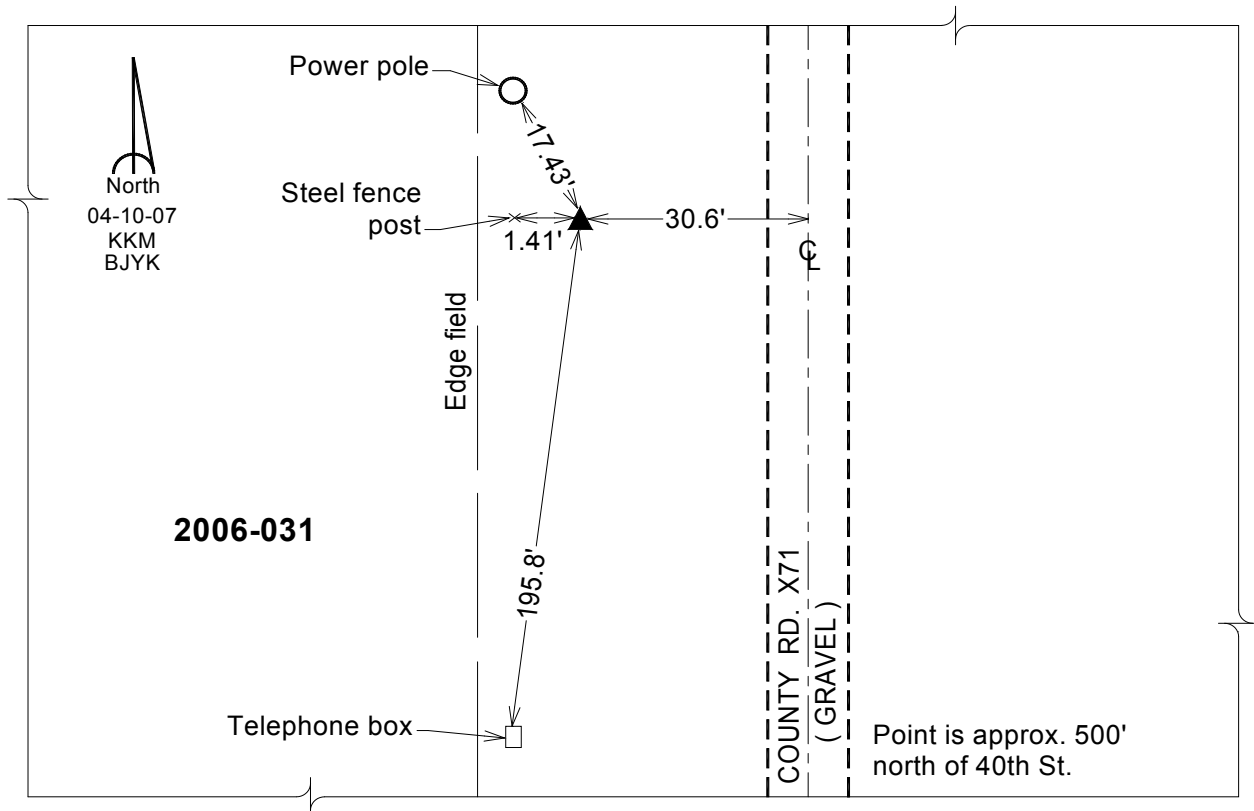
Point Name: **31**
Designation: 2006-031 Louisa Co GPS Control Pt.

NAD 83(NA2011) Latitude: **N41°07'03.60362"** Longitude: **W91°01'29.45584"**
NAVD 88 Ortho Height: **535.700** sft Ellip. Ht: **427.197**sft **Geoid12A**

Iowa South Zone (1402) Northing: **416903.347**sft Easting: **2322298.320**sft
Mapping Angle: **1°37'49"** Combination Scale Factor: **0.999929036**

IaRCS Zone 14 Northing: **6516202.641**sft Easting: **24562039.746**sft
Mapping Angle: **00° 08' 53"** Combination Scale Factor: **1.000001935**

Monument Type: Berntsen Top Security Rod Monument with a 2-1/2" dia. domed survey cap and permanent magnet encased in a white PVC pipe with a NGS style aluminum access cover.



This document was prepared by Dan Corbin, Inc. on February 26, 2015 for Louisa County, Iowa