

**Louisa County, Iowa**  
Horizontal Datum: **NAD 83(2011)** - Vertical Datum: **NAVD 1988**  
Iowa State Plane South Zone (1402)  
Iowa Regional Coordinate System Zone 14 Burlington TM  
US Survey Feet  
**2015**

Point Name: **32**

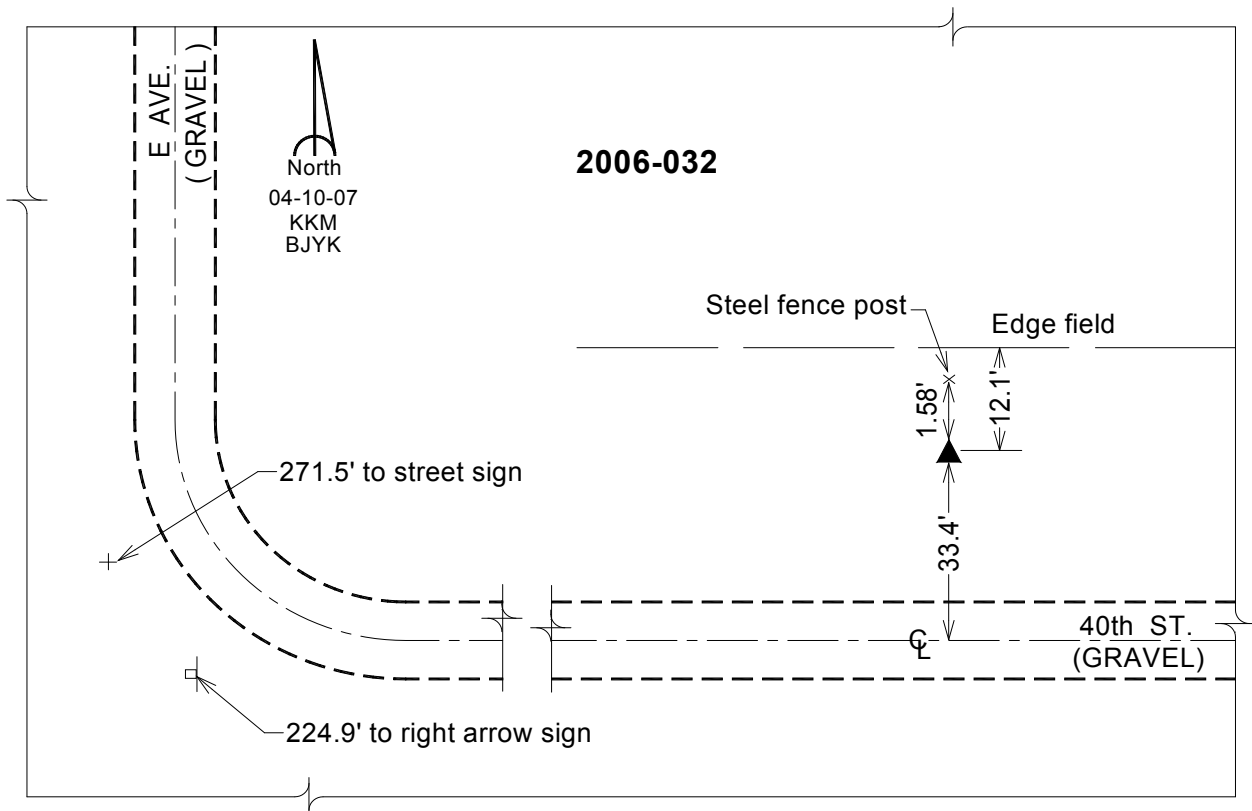
**Designation:** 2006-032 Louisa Co GPS Control Pt.

NAD 83(NA2011) Latitude: **N41°07'01.61227"** Longitude: **W91°04'27.85119"**  
NAVD 88 Ortho Height: **578.230** sft Ellip. Ht: **469.692**sft **Geoid12A**

Iowa South Zone (1402) Northing: **416317.310**sft Easting: **2308655.765**sft  
Mapping Angle: **1°35'52"** Combination Scale Factor: **0.999927022**

IaRCS Zone 14 Northing: **6515969.690**sft Easting: **24548385.612**sft  
Mapping Angle: **00° 06' 56"** Combination Scale Factor: **0.999998177**

**Monument Type:** Berntsen Top Security Rod Monument with a 2-1/2" dia. domed survey cap and permanent magnet encased in a white PVC pipe with a NGS style aluminum access cover.



*This document was prepared by Dan Corbin, Inc. on February 26, 2015 for Louisa County, Iowa*