

Louisa County, Iowa
Horizontal Datum: **NAD 83(2011)** - Vertical Datum: **NAVD 1988**
Iowa State Plane South Zone (1402)
Iowa Regional Coordinate System Zone 14 Burlington TM
US Survey Feet
2015

Point Name: **33**

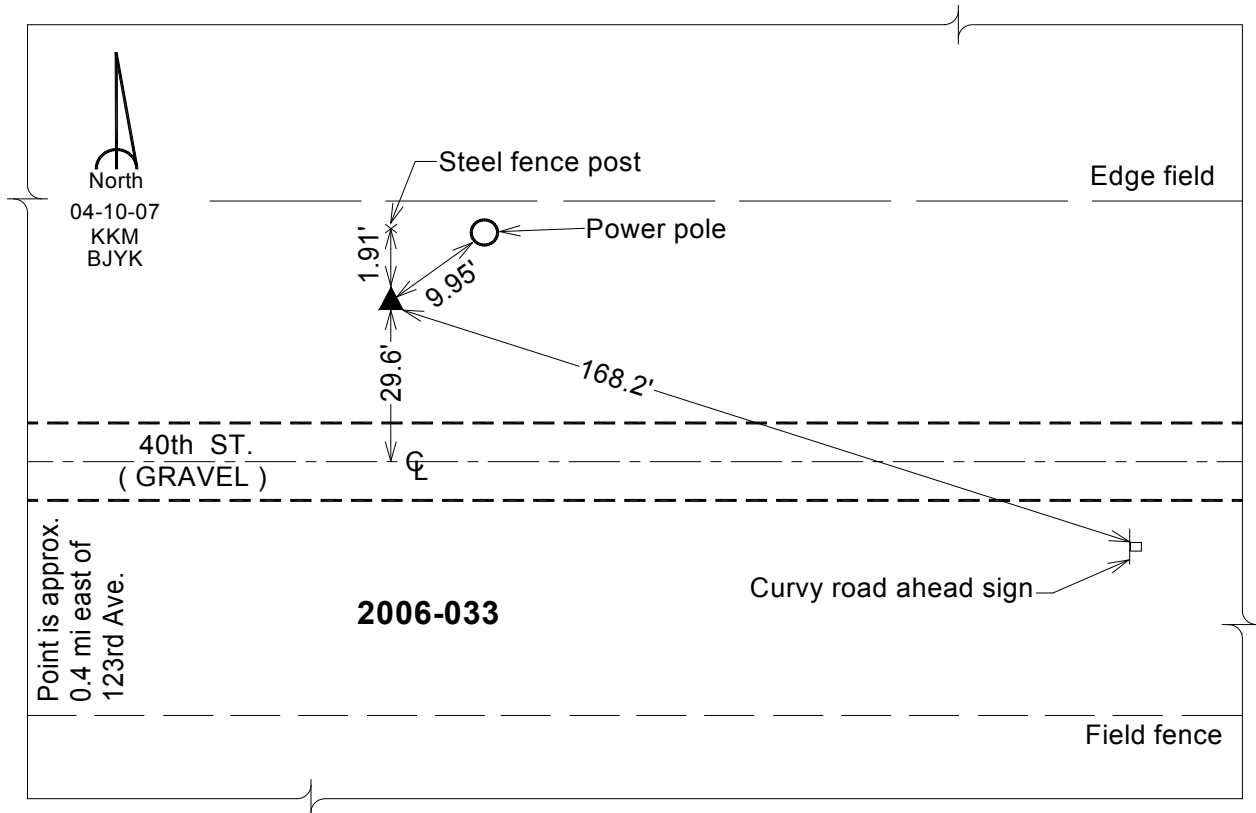
Designation: 2006-033 Louisa Co GPS Control Pt.

NAD 83(NA2011) Latitude: **N41°06'59.82228"** Longitude: **W91°08'30.23360"**
NAVD 88 Ortho Height: **561.220** sft Ellip. Ht: **452.639**sft **Geoid12A**

Iowa South Zone (1402) Northing: **415626.152**sft Easting: **2290116.655**sft
Mapping Angle: **1°33'12"** Combination Scale Factor: **0.999927849**

IaRCS Zone 14 Northing: **6515758.300**sft Easting: **24529833.522**sft
Mapping Angle: **00° 04' 16"** Combination Scale Factor: **0.999997335**

Monument Type: Berntsen Top Security Rod Monument with a 2-1/2" dia. domed survey cap and permanent magnet encased in a white PVC pipe with a NGS style aluminum access cover.



This document was prepared by Dan Corbin, Inc. on February 26, 2015 for Louisa County, Iowa