

**Louisa County, Iowa**  
 Horizontal Datum: **NAD 83(2011)** - Vertical Datum: **NAVD 1988**  
 Iowa State Plane South Zone (1402)  
 Iowa Regional Coordinate System Zone 14 Burlington TM  
 US Survey Feet  
**2015**

Point Name: **35**

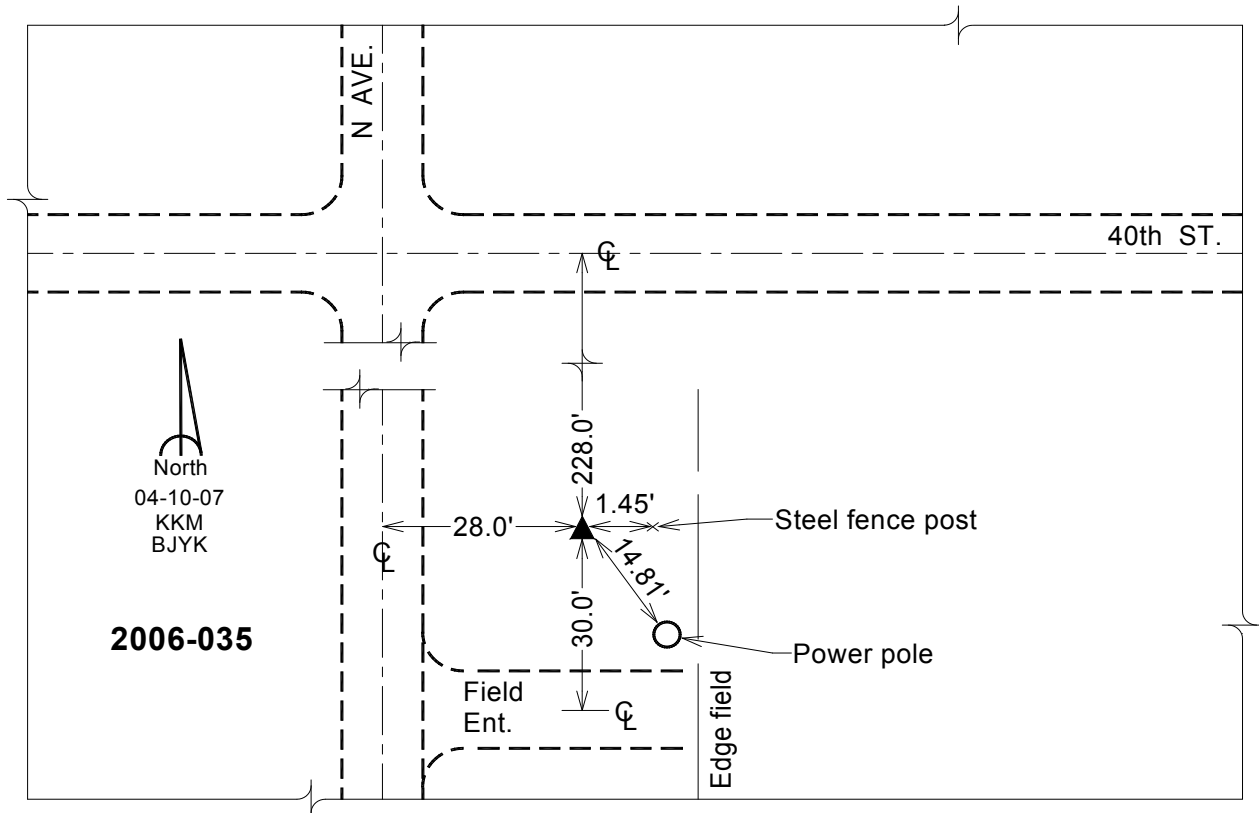
**Designation:** 2006-035 Louisa Co GPS Control Pt.

NAD 83(NA2011) Latitude: **N41°07'01.38038"** Longitude: **W91°15'19.24216"**  
 NAVD 88 Ortho Height: **717.760** sft Ellip. Ht: **609.219**sft **Geoid12A**

Iowa South Zone (1402) Northing: **414955.614**sft Easting: **2258819.337**sft  
 Mapping Angle: **1°28'43"** Combination Scale Factor: **0.999920366**

IaRCS Zone 14 Northing: **6515897.507**sft Easting: **24498527.175**sft  
 Mapping Angle: **-00° 00' 13"** Combination Scale Factor: **0.999988820**

**Monument Type:** Berntsen Top Security Rod Monument with a 2-1/2" dia. domed survey cap and permanent magnet encased in a white PVC pipe with a NGS style aluminum access cover.



*This document was prepared by Dan Corbin, Inc. on February 26, 2015 for Louisa County, Iowa*