

Louisa County, Iowa
 Horizontal Datum: **NAD 83(2011)** - Vertical Datum: **NAVD 1988**
 Iowa State Plane South Zone (1402)
 Iowa Regional Coordinate System Zone 14 Burlington TM
 US Survey Feet
2015

Point Name: **37**

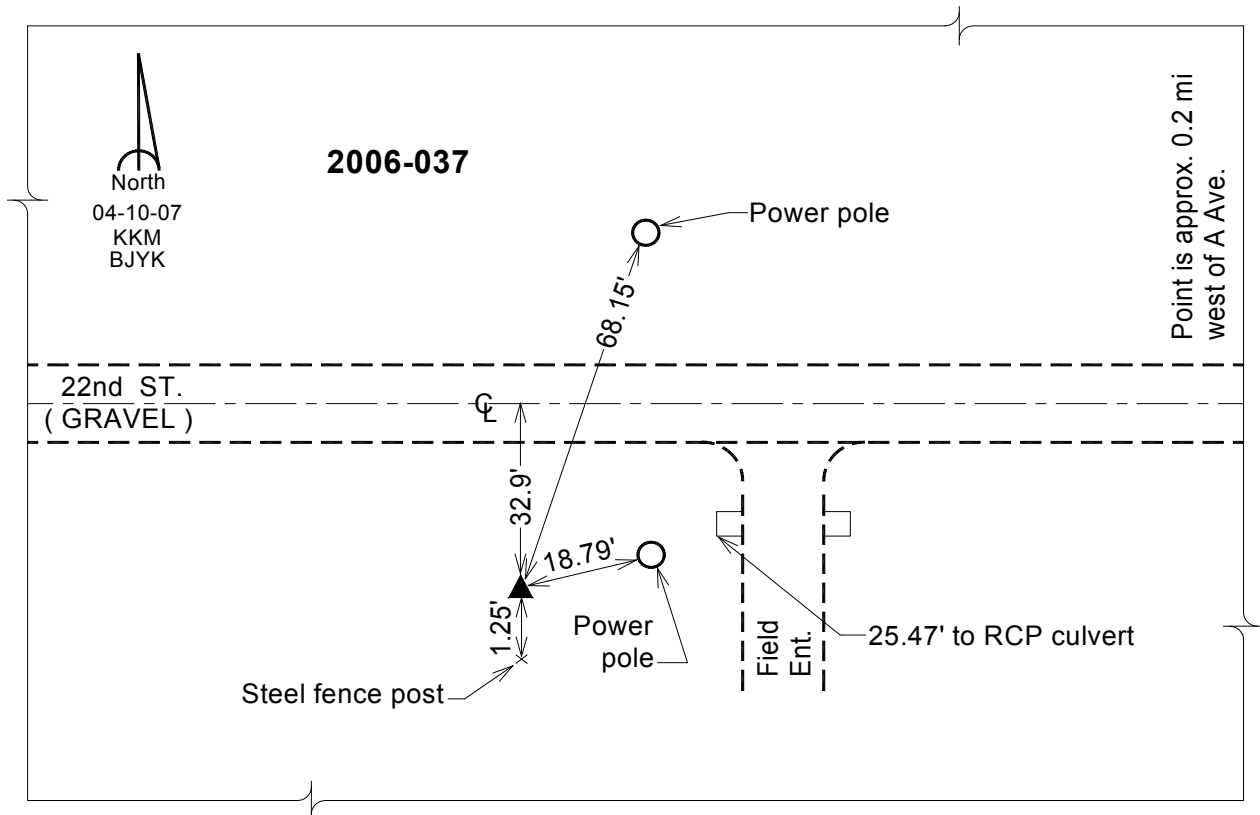
Designation: 2006-037 Louisa Co GPS Control Pt.

NAD 83(NA2011) Latitude: **N41°05'27.94669"** Longitude: **W91°01'31.15665"**
 NAVD 88 Ortho Height: **536.020** sft Ellip. Ht: **427.487**sft **Geoid12A**

Iowa South Zone (1402) Northing: **407222.610**sft Easting: **2322443.587**sft
 Mapping Angle: **1°37'48"** Combination Scale Factor: **0.999929799**

IaRCS Zone 14 Northing: **6506520.683**sft Easting: **24561934.524**sft
 Mapping Angle: **00° 08' 52"** Combination Scale Factor: **1.000001907**

Monument Type: Berntsen Top Security Rod Monument with a 2-1/2" dia. domed survey cap and permanent magnet encased in a white PVC pipe with a NGS style aluminum access cover.



This document was prepared by Dan Corbin, Inc. on February 26, 2015 for Louisa County, Iowa