

**Louisa County, Iowa**  
Horizontal Datum: **NAD 83(2011)** - Vertical Datum: **NAVD 1988**  
Iowa State Plane South Zone (1402)  
Iowa Regional Coordinate System Zone 14 Burlington TM  
US Survey Feet  
**2015**

Point Name: **38**

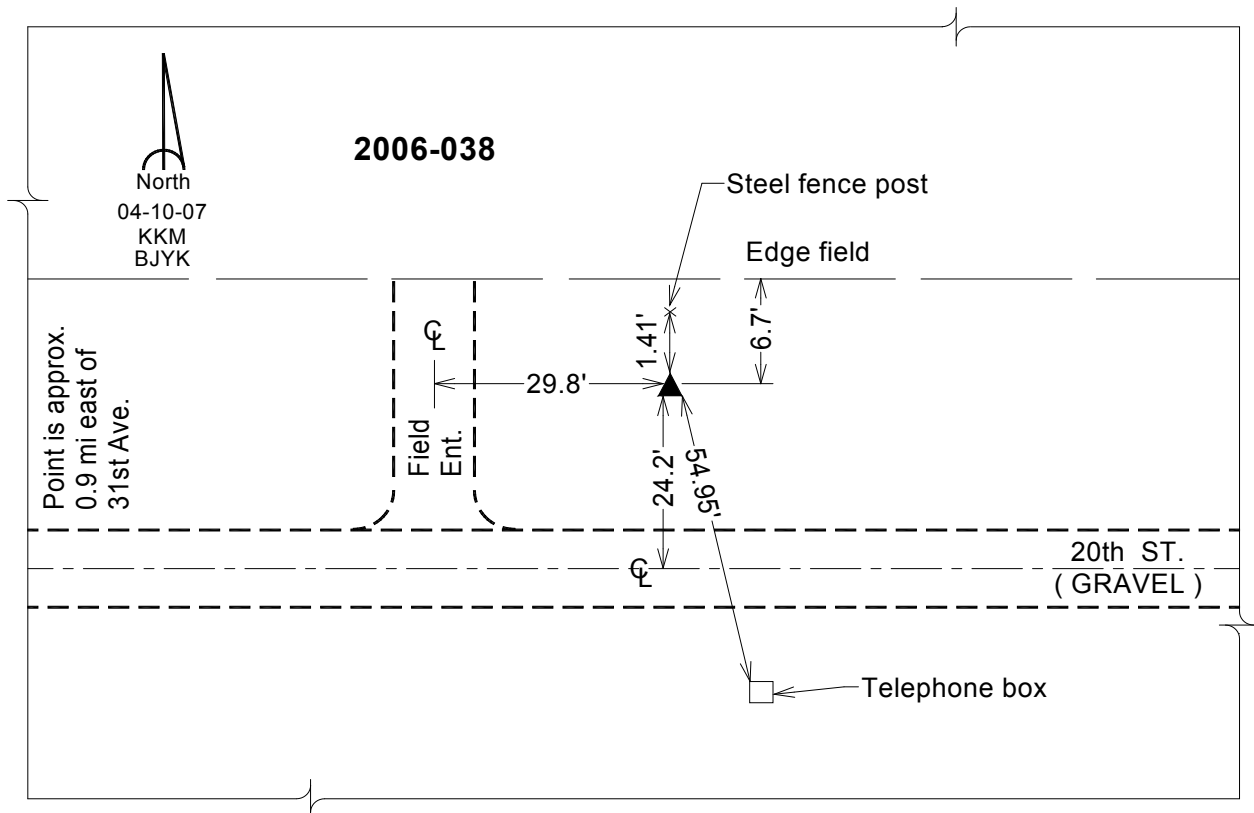
**Designation:** 2006-038 Louisa Co GPS Control Pt.

NAD 83(NA2011) Latitude: **N41°05'15.10242"** Longitude: **W90°58'07.10910"**  
NAVD 88 Ortho Height: **529.390** sft Ellip. Ht: **420.911**sft **Geoid12A**

Iowa South Zone (1402) Northing: **406372.770**sft Easting: **2338098.150**sft  
Mapping Angle: **1°40'03"** Combination Scale Factor: **0.999930234**

IaRCS Zone 14 Northing: **6505266.042**sft Easting: **24577563.006**sft  
Mapping Angle: **00° 11' 06"** Combination Scale Factor: **1.000004713**

**Monument Type:** Berntsen Top Security Rod Monument with a 2-1/2" dia. domed survey cap and permanent magnet encased in a white PVC pipe with a NGS style aluminum access cover.



*This document was prepared by Dan Corbin, Inc. on February 26, 2015 for Louisa County, Iowa*