

**Louisa County, Iowa**  
 Horizontal Datum: **NAD 83(2011)** - Vertical Datum: **NAVD 1988**  
 Iowa State Plane South Zone (1402)  
 Iowa Regional Coordinate System Zone 14 Burlington TM  
 US Survey Feet  
**2015**

Point Name: **79**

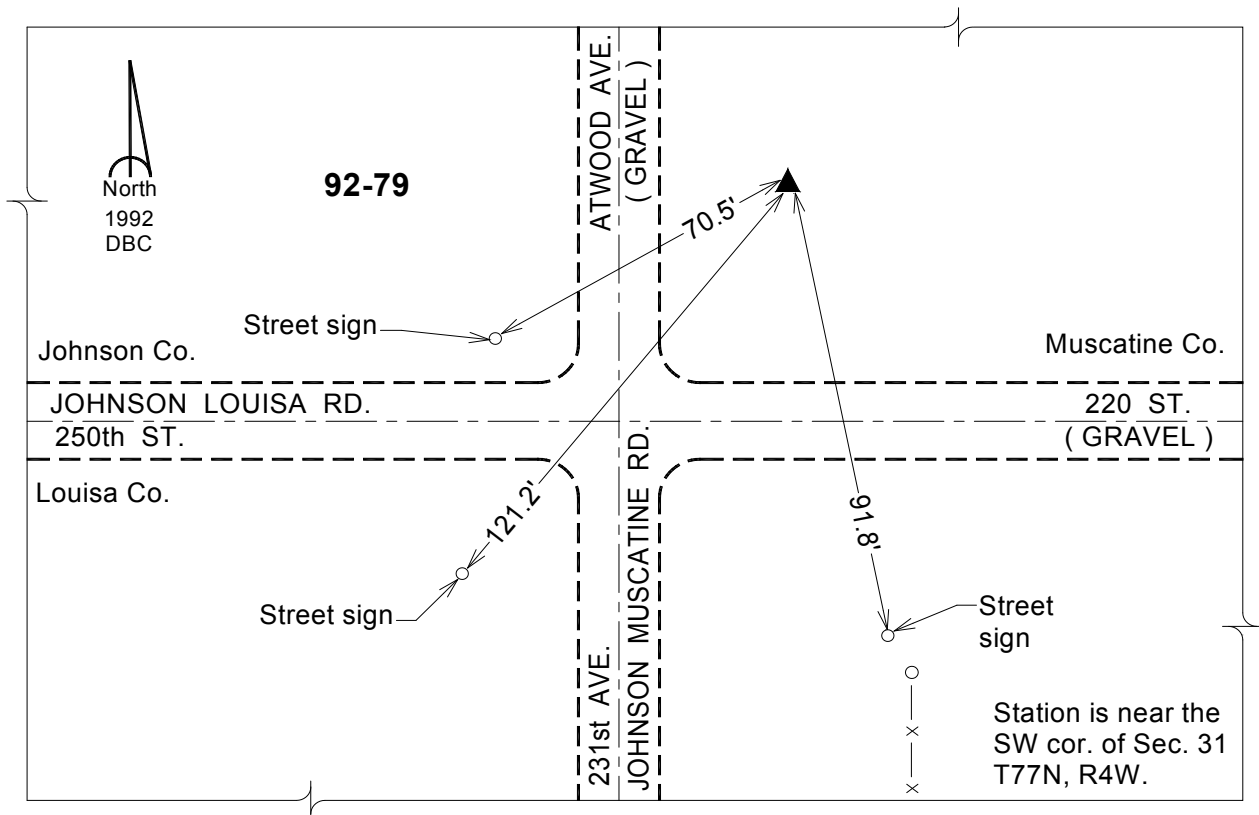
**Designation:** 92-79 Johnson Co GPS Control Pt. (set by ASI in 1992)

NAD 83(NA2011) Latitude: **N41°25'24.08814"** Longitude: **W91°22'06.31361"**  
 NAVD 88 Ortho Height: **615.480 sft** Ellip. Ht: **507.738sft** **Geoid12A**

Iowa South Zone (1402) Northing: **525741.167sft** Easting: **2224938.823sft**  
 Mapping Angle: **1°24'15"** Combination Scale Factor: **0.999931661**

IaRCS Zone 14 Northing: **6627529.950sft** Easting: **24467521.451sft**  
 Mapping Angle: **-00° 04' 42"** Combination Scale Factor: **0.999994885**

**Monument Type:** Berntsen Top Security Rod Monument with a 2-1/2" dia. domed survey cap and permanent magnet encased in a 6" dia. PVC pipe with a NGS style aluminum access cover.



*This document was prepared by Dan Corbin, Inc. on February 26, 2015 for Louisa County, Iowa*